

SLAYER®

User Guide
Single Group
Revision 5e



Table of Contents

<i>Section</i>	<i>Page</i>
Contacting Slayer	3
Warranty Information	4
Important Safety Advisory	5
Water Treatment Requirements	6
Recommended Tools & Accessories	8
Installing Your Machine	9
Factory Settings	16
Navigating the Menu	17
Using Slayer	21
Cleaning & Preventative Maintenance	41
Troubleshooting	55
Video Guides	56
Spare Parts	57

Contacting Slayer

Phone

+1 (206) 284-7171

Address

Slayer Espresso
6133 Sixth Avenue South
Seattle, Washington 98108
United States of America

Chief Executive Officer (CEO) & Creator

Jason Prefontaine

jason@slayerespresso.com

Chief Operating Officer (COO)

Fred Baruch

fred@slayerespresso.com

Technical Support

support@slayerespresso.com

Parts & Inventory

Melinda Davis

melinda@slayerespresso.com

Sales

Brandon King

brandon@slayerespresso.com

Customer Service & Office Admin

Elyse Stever

elyse@slayerespresso.com

Engineering

Spencer Branting

spencer@slayerespresso.com

Marketing & Content

Chris Elliott

chris.elliott@slayerespresso.com

Warranty Information

Slayer offers a 15-month (fifteen month) warranty on all equipment and parts, beginning at the date of shipment from the Seattle headquarters. All equipment and parts are warranted to be free from defect in material or workmanship. Unless otherwise specified in writing, this warranty covers materials only (e.g. equipment, parts) and excludes labor, shipping, and any other costs.

This warranty does not cover accidental damage to equipment, abuse of equipment, or improper use of equipment. "Improper use" includes, but is not limited to, the operation of a machine with inadequately treated water (defined as containing greater than 5 grains of hardness) and/or the operation of a machine with inadequate water supply. Any and all damage resulting from inadequate water treatment is expressly excluded from the coverage of this warranty. Read "Water Treatment Requirements" on page 6 for information about water-related issues.

Damage resulting from improper installation of equipment is expressly excluded from this warranty.

Warranty coverage does not include parts that are subject to normal wear and tear, as determined by Slayer. These include, but are not limited to, shower screens, portafilter gaskets, expansion or anti-suction valves, and preventative maintenance parts. Warranty coverage excludes glass or plastic parts, such as those used for custom body panels. Coverage for wood components will be determined by Slayer on a case-by-case basis, due to environmental factors and the nature of wood.

This warranty will immediately expire if you or a third party performs faulty maintenance, excessive use, or neglect of necessary service. This will include any instances in which, following the occurrence of a defect, you fail to immediately take all suitable measures to limit damage to the equipment and/or fail to provide Slayer with an opportunity to remedy the defect.

Slayer's sole responsibility and liability under the warranty set forth herein is limited to, in Slayer's sole discretion, repair or replacement of defective parts. Unless otherwise specified in writing, this will exclude labor, shipping, and any other costs.

To the fullest extent permitted by applicable Washington State (USA) laws, Slayer's warranty set forth herein is limited to you or the original purchaser of the equipment. Slayer does not, directly or indirectly, offer any warranty to any other person, including your customers, unless otherwise agreed in writing.

Except as expressly provided herein, all goods are provided to you as they are. Slayer disclaims all representations and warranties, whether expressed or implied, including warranties of title, non-infringement, merchantability, and fitness for a particular purpose.

Warranty claims must be authorized by a Slayer representative prior to repair or remedial action.

Important Safety Advisory

This guide includes important instructions about safe espresso machine installation, operation, and maintenance. Read this manual completely before installing and operating your Slayer espresso machine. Incorrect installation and operation may result in damage to the equipment, personal injury, or even death. Disregarding the instructions contained herein indemnifies Slayer from all resulting damages and may void the machine's warranty.

Shipping is coordinated by the customer and performed by a third party. Slayer is not responsible for damage incurred during transport. Upon receiving your machine, carefully inspect all packaging, equipment, and accessories for visible damage. Photograph any visible damage and immediately contact your shipping company representative. Comply with shipping company regulations. Do not connect your machine to power, water, or drainage until all issues have been resolved or your Slayer representative or reseller instructs you to do so. Failure to resolve issues before using equipment may result in further damage or injury.

Installation should be performed by qualified personnel only and must comply with all regulations and requirements of the authorities in your area. If guidance is needed to safely install your machine, contact your Slayer representative or reseller.

It is critical that an appropriately-rated and grounded electrical plug is used to supply your machine with power. This is essential for the safe operation and use of the equipment. Contact your Slayer representative or reseller with questions about this requirement. If you are unsure about the safety of the electrical configuration, do not attempt to install your machine.

Your Slayer espresso machine should only be used for the functions it was designed to perform. Using your machine outside of its defined functionality – as it is described in the "Using Slayer" section on page 21 of this guide – may be a safety hazard, resulting in property damage, physical injury, or even death, and will immediately void the warranty.

Slayer espresso machines are electrical appliances that should be used in a safe manner appropriate to devices of their kind:

- Do not connect your Slayer espresso machine to electrical power through an extension cord. The machine must be directly connected to an appropriately-rated and grounded power source.
- Do not position the power cord in walkways or other areas with high foot traffic.
- Slayer espresso machines are designed to be used indoors. When using your machine outdoors, take precautionary measures to protect it from moisture, humidity, and other natural elements.
- Before performing service on your machine, disconnect power source.

Water Treatment Requirements

Improper water treatment is the most frequent cause of espresso machine damage. Water is complex and varies significantly between regions, so take great care to test the water quality at your location and adjust as necessary. Employ the help of a reliable company (Slayer recommends [OptiPure](#) and [BWT](#)) to evaluate your water and recommend and administer treatments.

When evaluating water quality, the two most important factors to consider are calcium carbonate and chloride:

Calcium Carbonate: dissolved mineral that determines the "hardness" or "softness" of water.

The desirable range of hardness is 4-5 grains. Over time, calcium carbonate accumulates as a hard substance, called "scale", and will inhibit the flow of water. Machines subjected to "harder" water (greater than 6 grains) will accumulate scale faster and require maintenance sooner.

Chloride: chlorine combined with an electron from a negatively charged ion.

There are many types of chlorides, including calcium chloride, magnesium chloride, sodium chloride, etc. Chlorides produce salts that impart a strong taste, which alters the flavor of the espresso. Chlorides also encourage pitting corrosion, which causes damage to the machine.

Your water filtration company will create a treatment plan based on your water needs. Choose a filtration company that has solutions for addressing issues related to both calcium carbonate and chloride.

Common treatment options include carbon filtration, ion exchange and reverse osmosis:

Carbon Filtration: process by which water passes through the granular activated carbon, which attracts and retains many chemicals in the water that have an unpleasant taste or odor.

Carbon filtration is necessary for all Slayers. For water with 4-6 grains of hardness, carbon filtration is likely the only necessary water treatment.

Ion Exchange: process by which water passes through an ion exchange system, where undesirable mineral components are retained and more desirable substances such as sodium are released.

An ion exchange system should be used in combination with a carbon filtration system and is especially beneficial for water in the range of 6-9 grains of hardness. This system is relatively inexpensive and effective in

removing inorganic substances. It does not, however, remove organic substances, such as bacteria.

Reverse Osmosis with Blend-Back Valve (or Remineralized RO): process by which water is forced through a semi-permeable membrane with selective pore sizes at high pressure, then blended with the appropriate amount of desired minerals.

Reverse osmosis may be a good solution for water in the range of 6-9 grains of hardness, but is mandatory for water above 9 grains. When blending minerals with the filtered water, target a TDS (total dissolved solids) value of 75-125 ppm. Experiment with various TDS levels to determine what is ideal.

IMPORTANT: All Slayer espresso machines need to be connected to a carbon water filter to remove chlorine, sediments, odor, and undesirable tastes from the water. This requirement is in addition to any other necessary water filtration systems.

Filtration requirements may vary seasonally. Water should be tested during each season to determine the best filtration plan. Once a filtration method has been selected, take note of the filter's peak capabilities. Contact the equipment vendor to inquire about the life expectancy of the filters, then schedule replacement and re-installation accordingly.

Every time a new water filter is installed, thoroughly rinse the filter before attaching it to your machine or pump. Run water from the supply line through the filter and down a drain for at least 2 minutes. Skipping this step will damage your machine. Damage to or failure of your machine due to inadequately treated water is not covered under warranty.

Recommended Tools & Accessories

To properly use and maintain your espresso machine, Slayer recommends owning an assortment of tools and accessories. These can each be organized in two categories: Beverage Preparation and Equipment Care & Maintenance. Specific requirements accompany each recommendation.

Beverage Preparation

- Espresso grinder
 - Adjustable grind setting
 - Capability for grinding very fine: espresso-to-Turkish
- Gram scale
 - Low resolution: 0.1-gram (1/10-gram) increments
- Shot glass
- Soft towel
- Steaming pitcher
 - Narrow spout
- Tamper
 - 58mm base diameter
- Thermometer

Equipment Care & Maintenance

Tools

- Allen keys
- Crescent wrench
- Flat-head screwdriver
- Grouphead brush
- Needle-nose pliers
- Phillips-head screwdriver
- Pick or awl
- Pliers
- Socket wrench (9/16")
- Wrench

Supplies

- Approved espresso machine cleaner
- Approved espresso machine steam wand cleaner
- Non-abrasive surface cleaner
- Slayer lubricant
- Teflon tape
- Tung oil

Parts

See list of recommended spare parts on page 57

Installing Your Machine

Only qualified service personnel should install Slayer espresso machines. Incorrect installation may result in injury and/or damage to the equipment. Please read the "Important Safety Advisory" section on page 5 before beginning installation.

Install your Slayer espresso machine with the following ordered steps:

1. Prepare Site
2. Unpack Equipment
3. Connect Drain Hose
4. Connect Water Line
5. Connect Machine to Power
6. Fill Tanks
7. Calibrate Brew Pump Pressure
8. Turn On Heating Elements
9. Set Time and Date

Step 1: Prepare Site

Your installation site will need direct access to power, water, and drainage. Building regulations vary by region, so confirm local requirements prior to connecting your machine.

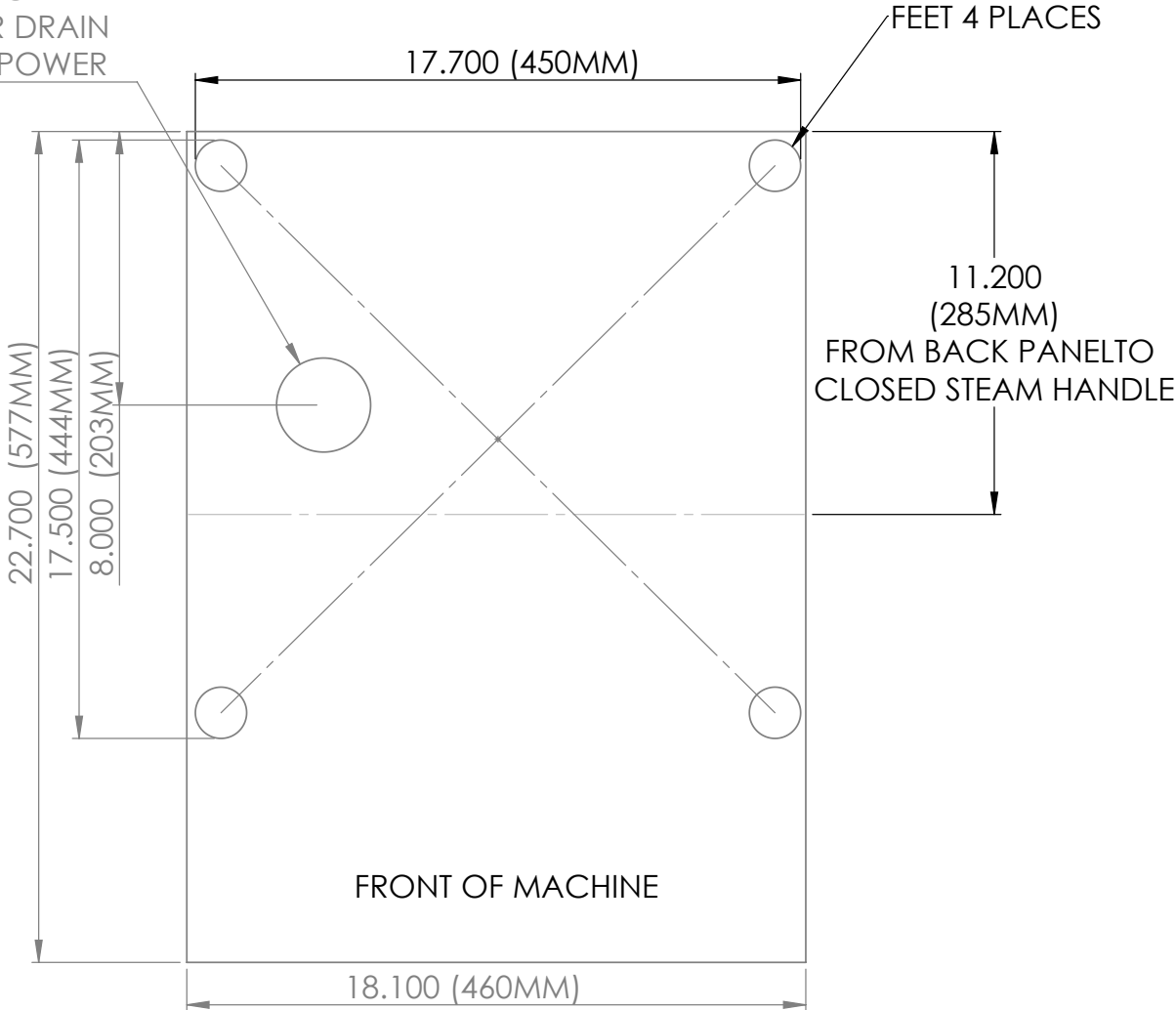
Using quality, treated water is essential to achieving the best possible results when preparing coffee and may also extend the life of your machine. Read "Water Treatment Requirements" on page 6 for information about avoiding and addressing water-related issues.

Your Slayer Single Group espresso machine weighs approximately 50 kilograms (110 pounds) when filled with water and needs to be installed on a structure that is capable of supporting its weight.

Use the following diagram to locate and drill holes in the counter for the water and drain lines. Note that electrical plugs vary in size and a larger hole may be required to accommodate the main power cord.

TOP VIEW LOOKING DOWN

2.750 (70MM)
THIS IS THE PLACEMENT
OF HOLE FOR DRAIN
WATER AND POWER



HEIGHTS:

TO TOP OF BACK PANEL
12.75" (323.8 MM)

TO TOP OF BREW ACTUATOR
13.4" (340.3 MM)

TO TOP OF STEAM ACTUATOR
13.75" (349.3 MM)

PORTAFILTER TO DRIPTRAY
4.7" (119.4 MM)

Step 2: Unpack Equipment

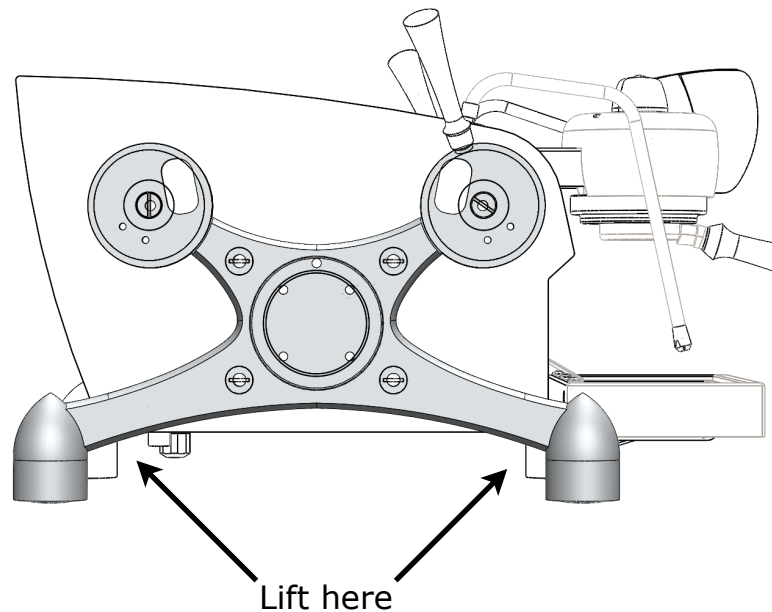
Your Slayer espresso machine will arrive in a lidded wooden crate, bolted to a pallet at the base. Unpack with the following steps.

Parts and tools:

- Phillips-head screwdriver
- Socket wrench
- Two (2) rubber feet (included)
- Steam handles (included)

Procedure:

1. Use a phillips-head screwdriver to loosen and remove the screws (approximately eight [8] screws) located along the lower edge of the crate, two (2) at each corner.
2. Carefully lift the lid from the pallet.
3. Remove all banding and packing material from the machine.
4. The machine is attached to the pallet with two (2) bolts that are screwed into two (2) of its four (4) legs, one on each side of the machine. Use a socket wrench to loosen and remove the two (2) bolts from the underside of the pallet.



5. Attach the included rubber feet to the bottom of the two (2) legs that were bolted to the pallet.
6. Prepare surface by laying out one or more towels, which will rest under the machine's feet and allow for easy sliding into desired position.
7. Holding the machine by the lower part of the Xs, as shown below, employ two (2) people to lift the machine up and onto the towels on the prepared surface.

8. Slide machine into desired position, then left legs, one or two at a time, to remove towel(s).
9. Attach the steam and hot water handles by threading into place.
10. Pull the steam actuator forward, into the "on" position.
 - ▶ Leave steam actuator in the "on" position for "Step 8: Turn on Heating Elements".

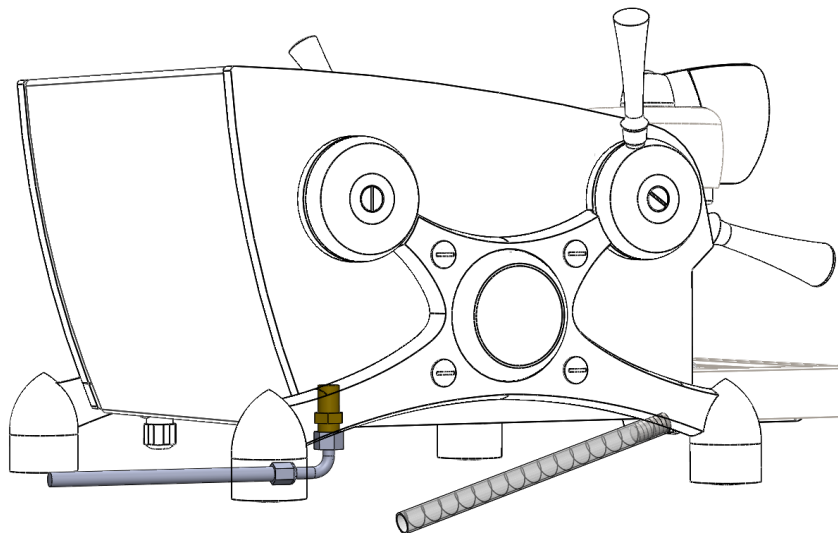
Step 3: Connect Drain Hose

Parts and tools:

- Drain hose (included)
- Hose clamp (included)
- Flat-head screwdriver

Procedure:

1. Use the hose clamp to fasten the drain hose to the drain outlet, as shown below.
 - ▶ The drain hose has an inside diameter of 5/8" (1.6cm).
2. Prevent clogging by ensuring that the drain line always goes downwards.
 - ▶ Leave steam actuator in the "on" position for "Step 8: Turn on Heating Elements".



Step 4: Connect Water Line

IMPORTANT: Before connecting a water treatment system to your espresso machine, rinse the system by running water through it for at least two (2) minutes. Failure to follow this step will result in equipment damage. Read the Water Treatment Requirements on page 6 for information about avoiding and addressing water-related issues.

Parts and tools:

- 60"x3/8" braided stainless steel hose
- Wrench

Procedure:

1. Connect water treatment system to main water line.
2. Use a braided stainless steel hose to connect the water treatment system outlet to the espresso machine water inlet (located at the bottom-rear of the machine); tighten with a wrench.
 - ▶ The end with the 90-degree fitting should connect to the espresso machine.
 - ▶ Leave steam actuator in the "on" position for "Step 8: Turn on Heating Elements".

Step 5: Connect Machine to Power

Your espresso machine will ship with the power configuration requested at the time of purchase. Machines designated for 110 volts will arrive with a plug attached to the power cord; machines designated for 220 volts will not. Only an electrician or approved technician should wire the power cord into an appropriately-rated plug end.

1. Per previous steps, ensure that the steam actuator is pulled forward, into the "on" position, and the drain hose and water line are connected.
2. After attaching a plug end (if applicable), insert the main power cord into an appropriately-rated and grounded receptacle.
 - ▶ Once connected to power, the machine will automatically turn on, the display will read "INITIALIZING", and the tanks will begin to fill.
 - ▶ Leave steam actuator in the "on" position for "Step 8: Turn on Heating Elements".

Step 6: Fill Tanks

Per "Step 5: Connect Machine to Power", tanks will automatically begin to fill once the machine is connected to power. While filling, the screen will display an upward-facing arrow ("↑"). Filling is complete when the pump motor ceases to work and a "click" is heard. Wait to turn on the heating elements until instructed to do so in "Step 8: Turn On Heating Elements".

1. When Slayer has filled completely, move the brew actuator left, into the "on" position.
2. When water begins to run from the grouphead, return the brew actuator to the "off" position.
 - ▶ Leave steam actuator in the "on" position for "Step 8: Turn on Heating Elements".

Step 7: Calibrate Brew Pump Pressure

Before beginning "Step 7: Calibrate Brew Pump Pressure", read "Navigating the Menu" on page 17.

After machine testing at the Slayer studio, pump power is adjusted to near-minimum capacity (10%) in order to prepare for calibration at your location. Calibrate the brew pump pressure with the following steps.

Parts and tools:

- Portafilter
- Blind portafilter insert

Procedure:

1. Per previous steps, ensure that the steam actuator is pulled forward, into the "on" position.
2. Press the round touch sensor near the center of the screen to activate the menu.
3. Using the pad of your thumb, swipe from left to right until the "Brew Pump Pressure" setting comes into view.
4. Press the round touch sensor to enter the "Brew Pump Pressure" setting. "Up" and "down" arrows will appear on the right side of the screen.
5. Adjusting the brew pump pressure through the touchscreen interface is accomplished by increasing or decreasing a percentage value that represents brew pump pressure relative to maximum capacity. Using the pad of your thumb, press the arrows to adjust the value in one-percent (1%) increments between "0" and "100".
 - ▶ To increase the pressure, increase the value.
 - ▶ To decrease the pressure, decrease the value.
6. While still viewing the "Brew Pump Pressure" setting, set and test the pump pressure with the following steps.
 - a) Replace portafilter basket with blind insert and lock in grouphead.
 - b) Move the brew actuator to the "full brew" position.
 - c) During "full brew", watch the brew pressure gauge and adjust the value from step 5 until the pressure gauge registers 10 bar.
 - ▶ A machine that registers 10 bar with a blind insert will register approximately 9 bar when loaded with coffee that has been ground to the appropriate degree of fineness.
 - d) To confirm your new setting, press the round touch sensor.
 - ▶ Leave steam actuator in the "on" position for "Step 8: Turn on Heating Elements".

NOTE: Due to the unique method by which Slayer espresso machines interpret brew pressure, the pressure gauge will read 0 bar unless a loaded portafilter, blind insert, or Scace device is locked in the grouphead.

Step 8: Turn On Heating Elements

Before beginning "Step 8: Turn On Heating Elements", read "Navigating the Menu" on page 17.

1. Per previous steps, ensure that the steam actuator is pulled forward, into the "on" position.
2. Press the round touch sensor near the center of the screen to activate the menu.
3. Using the pad of your thumb, swipe from left to right until the "Advanced Setting" sub-menu comes into view; swipe from right to left for immediate access.
4. Press the round touch sensor to enter the "Advanced Setting" sub-menu.
5. Swipe from left to right until the "Heater Control" setting comes into view.
6. Press the round touch sensor to enter the "Heater Control" setting. "Up" and "down" arrows will appear on the right side of the screen.
7. Use the "up" and "down" arrows to toggle between "ON" and "OFF"; use the round touch sensor to toggle between "BREW" and "STEAM".
 - ▶ Brewing and steaming functionalities may be used independently. For faster warm-up, you may turn on only the element which heats water for your desired function.
 - ▶ Slayer's brew temperature is most stable when the steam tank is hot. For best performance, turn on both heating elements.
8. To confirm, press the round touch sensor. To exit menu navigation, move the brew actuator to the "pre-brew" or "full brew" position, then back to "off". The new temperature will be achieved and stable within 10 minutes.
 - ▶ On the screen, a flashing colon will indicate heating element activity, appearing near the brew temperature reading to indicate brew tank heating and appearing near the steam pressure reading to indicate steam tank heating.
9. The machine is heated when steam begins to flow from the steam wand; at this point, move the steam actuator into the "off" position.
10. Lift to remove cup tray and check the inside of the machine for leaks or collected water.

Step 9: Set Time and Date

During machine testing at the Slayer studio, machines are programmed to display the local time and date in Seattle. After setup, you may reprogram the time and date. Read "Navigating the Menu" on page 17 for help completing this step, then complete the steps under "Using Slayer > Access Advanced Settings > Set Time / Date" on page 37.

Factory Settings

Brew Tank Temperature:	93°C (200°F)
Steam Tank Pressure:	1.5 bar
Flow Rate:	40 grams per 30 seconds
Pump Pressure:	9 bar

Navigating the Menu

The Single Group Slayer is equipped with a touchscreen interface that displays many of the machine's essential functions. Through this interface, you have access to brewing parameters, advanced operating settings, and more.

Basics of Navigation

- Settings, sub-menus, and queries display in a rectangular area in the top-left portion of the screen.
- Touch sensors are located directly beneath the rectangular menu display, in the lower-left portion of the screen.
 - ▶ For best results, use the pad of your thumb to swipe firmly across the entire length of this area.
 - ▶ Swipe from left to right to move forward in the menu structure; swipe from right to left to move backward in the menu structure.
- A round touch sensor is located directly beside the rectangular menu display, near the center of the screen.
 - ▶ Press the center of the circle with the pad of your thumb to enter sub-menus and/or confirm settings.
- After entering a sub-menu, two (2) arrows will appear on right side of the screen.
 - ▶ Press the "up" and "down" arrows with the pad of your thumb to adjust values incrementally; hold to scroll through values.
- To confirm and save settings, press the circle near the center of the screen OR move the brew actuator to the "pre-brew" or "brew" position.
- While navigating the menu, moving the brew actuator to the "pre-brew" or "brew" position will confirm any altered settings and exit the menu WITHOUT initiating the pre-brew or brew functions.
 - ▶ Rule excepted in "Brew Pump Pressure", "Group Cleaning", "Bleed Group", "Set PID Values", "Brew Temp Offset", and "Pressure Offset" sub-menus.
- The menu layout is circular; after swiping through the end of the menu options, the first menu option will reappear.

Getting Started

While the machine is idle, the screen will display up to six (6) units of information:

- Brew temperature in degrees Fahrenheit or Celsius, depending on saved preference (top-left)
- Steam tank pressure in bars (lower-left)
- Time of day (top-right)
- Day of week (lower-right)
- Heating element activity, represented by flashing colon: appears near brew temperature reading to indicate brew tank activity; appears near steam pressure reading to indicate steam tank activity
- Steam tank fill status, represented by an upward-facing arrow ("↑") next to the steam tank pressure readout

Press the round touch sensor near the center of the screen to activate the menu. Swipe from left to right to navigate menu options in the intended order. Swiping from right to left will cycle menu options in reverse order, starting with "Advanced Setting".

Menu Options & Descriptions

The first level of navigation has six (6) options, plus access to the Advanced Settings:

Brew Temperature

- Real-time temperature reading at the group
- Displayed in degrees Fahrenheit or Celsius, depending on saved preference
- Adjustable in tenth-degree (0.1-degree) increments

To adjust the brew temperature, see instructions under "Using Slayer > Adjust Brew Tank Temperature" on page 30.

Brew Pump Pressure

- Percentage value that represents brew pump pressure relative to maximum capacity
- Adjustable in one-percent (1%) increments between "0" and "100"

To adjust the brew pump pressure, see instructions under "Using Slayer > Adjust Brew Pump Pressure" on page 30.

Group Cleaning

- Automated cleaning program (series of backflush cycles)

To begin the group cleaning program, see instructions under "Cleaning & Preventative Maintenance > Daily > Grouphead" on page 42.

Steam Pressure

- Real-time pressure reading at steam tank
- Displayed in bars
- Adjustable in tenth-bar (0.1-bar) increments

To adjust the steam tank pressure, see instructions under "Using Slayer > Adjust Steam Pressure" on page 31.

Power Management

- Heating priority: brew tank OR steam tank

To adjust the power management setting, see instructions under "Using Slayer > Adjust Power Management Tank Priority" on page 31.

Pre-Brew

- Timer that automatically engages “full brew” after specified time
- Adjustable in one-second (1-second) increments
- “0” value disables pre-brew timer function

To adjust the pre-brew timer, see instructions under “Using Slayer > Adjust Pre-Brew Timer” on page 31. To brew with the pre-brew timer, see instructions under “Using Slayer > Using Pre-Brew Timer” on page 32.

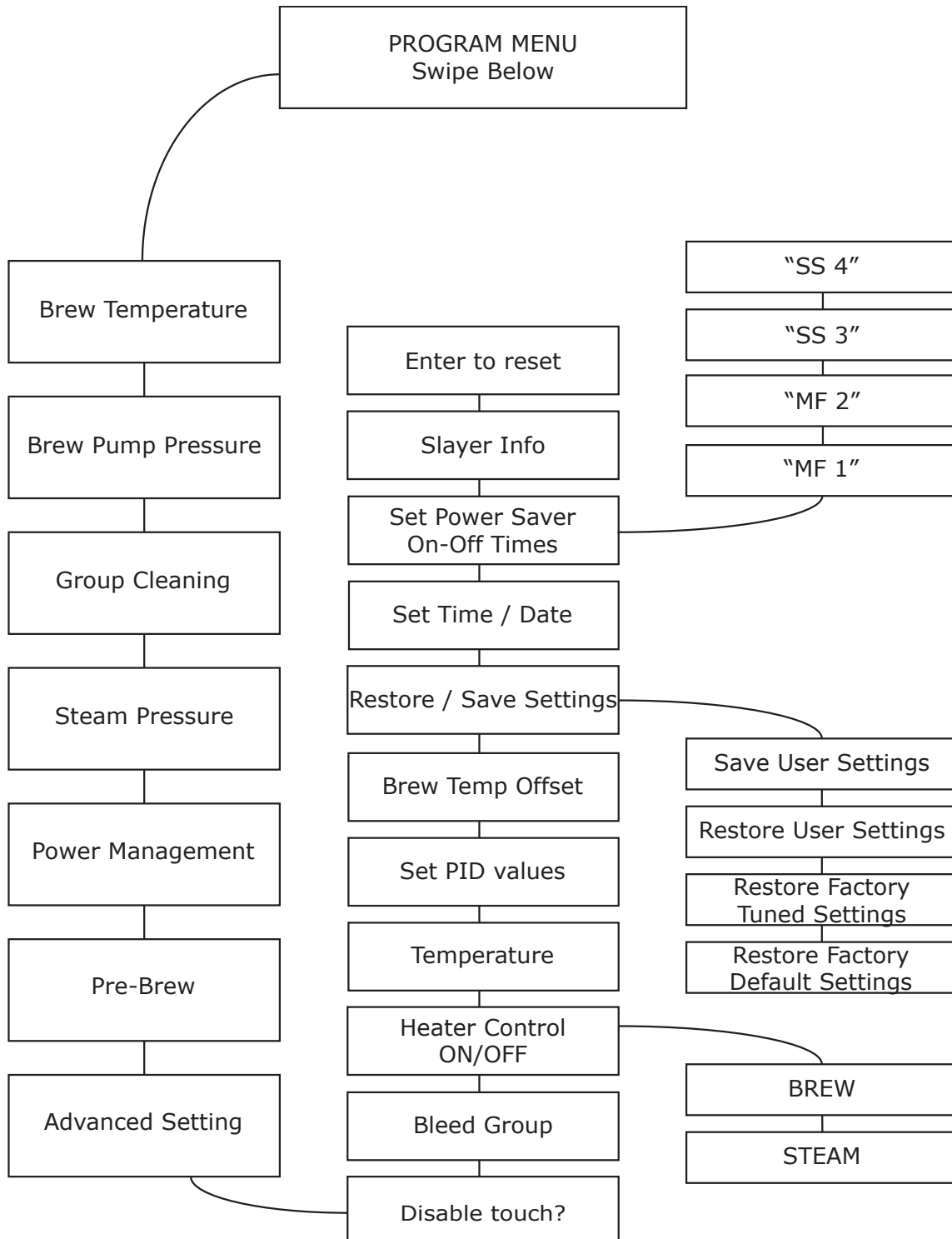
Advanced Setting

IMPORTANT: Most of the machine’s advanced programs and settings are set at the studio to ensure optimal performance. Do not run or manipulate without first reading this manual in its entirety, then – if unsure – consulting your Slayer representative, reseller, or qualified service personnel.

- Disable touch?
 - 20-second touch sensor “sleep” used to safely clean display
- Bleed Group
 - Automated bleeding program used to force trapped air from group
- Heater Control ON/OFF
 - Independent control of power to brew and steam tank heating elements
- Temperature
 - Unit for temperature display: Fahrenheit or Celsius
- Set PID Values
 - Algorithm parameters that assists in accurate water heating according to saved settings
- Brew Temp Offset
 - Value that assists in accurate brew temperature reading
- Restore / Save Settings
 - Save User Settings: program that saves current machine settings as user preferences
 - Restore User Settings: program that overwrites current settings and restores user preferences
 - Restore Factory Tuned Settings: program that overwrites all user preferences and restores Slayer-recommended settings; tunings specific to your machine remain intact
 - Restore Factory Default Settings: program that overwrites all user and Slayer preferences and restores hard-coded settings; tunings specific to your machine are erased
- Set Time / Date
 - Time and date setting and readout
- Set Power Saver On-Off Times
 - Power-up schedule, including multiple power-saving stages per day and separate weekend calendar
- Slayer Info
 - Your serial number and software version
- Enter to reset

- Program that reboots machine and reinitializes software; same effect as unplugging, then returning power source

To run Slayer's advanced programs and adjust its settings, see instructions under "Using Slayer > Access Advanced Settings" on page 32.



Introductory Brewing Information

Coffee “beans” are the seeds from berry-like fruits that grow on shrubs in equatorial regions. After picking and processing, the beans are roasted, ground, and dissolved in water to yield a coffee beverage.

Brewing espresso is a unique method of coffee extraction in which water is added to ground coffee under intense pressure. As a result, the beverage, when compared to filter coffee (e.g. pour-over, immersion), contains a higher concentration of dissolved coffee, feels heavier in the mouth, and asserts stronger flavor.

The espresso machine is the preferred equipment for preparing espresso. Therein, coffee is secured, water is heated, pressure is applied, filtration occurs, and the beverage is dispensed. The entire process takes less than one (1) minute.

Many variables affect espresso extraction and therefore require the attention of the barista. Consider the following generalizations and guidelines when preparing espresso.

Coffee Origin

Coffee plants are cultivated around the world in equatorial regions that have varying climates and growing conditions. Every location – country, locale, farm, and lot – produces coffee with distinct characteristics that contribute to discernible differences in beverage flavor. Slayer is unique in its ability to highlight the flavors of coffee from a single origin, so – even if you usually prefer blends – consider coffees that advertise a specific region. In doing so, you will experience the unique terroir of those coffees.

Plant Variety

Like other fruits (e.g. apples, oranges), coffee beans may come from one of many varieties of the same plant. Common varieties include Typica, Bourbon, and Geisha, among others. Every variety produces coffee with distinct characteristics that contribute to discernible differences in beverage flavor.

Processing Method

There are many unique processes by which coffee seeds may be separated from the fruit containing them. Every process produces coffee with distinct characteristics that contribute to discernible differences in beverage flavor. Note these examples:

“Washed” process = increased acidity, enhanced flavor clarity, clean body

“Natural” process = fruit-forward flavor, full body

“Pulped natural”, “semi-washed”, and “honey” processes = borrowed characteristics from “washed” and “natural” processes

Green Coffee Freshness

After it has been picked and processed, green (i.e. un-roasted) coffee has a considerable shelf-life. However, the potential quality of coffee beverages deteriorates with the age of the green coffee. For best results, buy roasted coffee from a trustworthy supplier that guarantees the freshness of its green coffee.

Roast Profile

Roasting makes the dense, green coffee bean porous and soluble and is the first step in preparing coffee for extraction. Coffee may be roasted to varying degrees by a variety of technologies, each producing coffee with distinct characteristics that contribute to discernible differences in beverage flavor.

Generally, the flavor of espresso prepared from light-roasted coffee will more closely resemble the characteristics of its origin, variety, and processing method (e.g. "bright", "fruity", etc.). Conversely, the flavor of espresso prepared from dark-roasted coffee will more closely resemble the characteristics of the roasting process (e.g. "smoky"). Because dark roast profiles may not exhibit the full potential of your Slayer, nor the flavorful complexity of your coffee, Slayer recommends light and medium roasts.

Roasted Coffee Freshness

After roasting, coffee beans are increasingly vulnerable to deterioration. Preserve freshness by storing in a cool, dark, and sealed container. Ideally, use a container that allows the outward flow of gas, which coffee releases as it ages, but prevents the inward flow of oxygen. Espresso is generally most flavorful when prepared with coffee that has "rested" for at least two (2) days after roasting but not exceeded three (3) weeks. These guidelines are especially important for dark-roasted coffee, which deteriorates faster than light-roasted coffee.

Ground Particle Size

Preparing espresso requires finely-ground coffee and a professional grinder. Due to its slower introduction of water, permitted by a precision needle valve, Slayer is able to brew espresso with coffee that has been ground at extremely fine settings. Smaller particles reveal more of the coffee's surface area to water, thereby allowing the extraction of more flavor-carrying oils. These oils create a rich, silky mouthfeel, mask bitterness, and increase perceived sweetness.

When setting up your grinder, target a setting that achieves the recommended beverage yield with the recommended dose weight in the recommended brew time. Continue reading for recommendations regarding these brewing parameters. Adjust grind as necessary, noting these rules:

Finer grind setting (small particles)

- Longer extraction time
- Enhanced body
- Reduced clarity
- Recommended when...

- ▶ Espresso tastes sour
- ▶ Espresso feel thin
- ▶ Espresso extracts quickly
- ▶ Espresso has no crema

Coarser grind setting (large particles)

- Shorter extraction time
- Reduced body
- Enhanced clarity
- Recommended when...
 - ▶ Espresso tastes bitter
 - ▶ Espresso feels muddy
 - ▶ Espresso extracts slowly

For recommendations regarding espresso grinders, see "Recommended Tools & Accessories" on page 8.

Dose Weight

Dose weight refers to the amount of ground coffee used for a single serving of espresso. When considered alongside the beverage yield, dose weight is part of the brew ratio, which correlates with the perceived strength of the espresso and influences the extraction process. Slayer recommends using a scale to measure 19-21 grams of ground coffee per espresso serving. Begin with 20 grams, then adjust dose weight as necessary, noting these rules:

Heavier dose

- Increased flavor intensity
- Longer extraction time
- Recommended when...
 - ▶ Espresso tastes sour
 - ▶ Espresso feels thin
 - ▶ Espresso extracts quickly
 - ▶ Espresso has no crema

Lighter dose

- Decreased flavor intensity
- Shorter extraction time
- Recommended when...
 - ▶ Espresso tastes bitter
 - ▶ Espresso feels muddy
 - ▶ Espresso extracts slowly

For recommendations regarding scales, see "Recommended Tools & Accessories" on page 8.

Bed Depth

With most espresso machines, firmly tamping ground coffee is essential to forming a puck through which water will evenly flow. Due to its slower introduction of water, Slayer changes the importance of tamping: instead of

tamping to a specific pressure (e.g. 30 lb.), Slayer recommends tamping to a specific depth in order to achieve the adequate headspace between the coffee puck and the shower screen. This space allows the coffee to release gas and bloom before brewing. To ensure consistent results, target a tamp depth that levels the top of the tamper piston with the top of the portafilter basket (approximately 10 mm).

For recommendations regarding tampers, see "Recommended Tools & Accessories" on page 8.

Water Temperature

At the studio, the brew tank temperature is set at 93°C (200°F). Coffee is best brewed with water heated to 90-95°C (195-204°F).

Begin with the studio setting, then adjust temperature as necessary, noting these rules:

Higher temperature

- Increased extraction rate
- Enhanced acidity
- Recommended when espresso tastes sour

Lower temperature

- Decreased extraction rate
- Reduced acidity
- Recommended when espresso tastes bitter

To adjust the brew temperature, see instructions under "Using Slayer > Adjust Brew Tank Temperature" on page 30.

Water Pressure

At the studio, the brew pump pressure is set at 9 bar. Espresso is best brewed with 8-10 bar pressure. More dense coffees (such as those grown at higher elevation, processed with the "washed" method, and/or roasted light) may endure higher pressure, while less dense coffees (such as those grown at lower elevation, processed with the "natural" method, and/or roasted medium-to-dark) prefer lower pressure.

To adjust the brew pump pressure, see instructions under "Using Slayer > Adjust Brew Pump Pressure" on page 30.

Flow rate

At the studio, the flow rate is set at 40 grams per 30 seconds and correlates with the duration of pre-brew: increased flow rate will lead to a shorter pre-brew time and decreased flow rate will lead to a longer pre-brew time.

To adjust the flow rate, see instructions under "Using Slayer > Adjust Flow Rate" on page 29.

Beverage Yield

Beverage yield refers to the weight or volume of a single serving of espresso. When considered alongside the dose weight, beverage yield is part of the brew ratio, which correlates with the perceived strength of the espresso and influences the extraction process. Slayer recommends using a scale or graduated shot glasses to measure 25-35 grams or 1.0-1.5 fluid ounces of espresso per dose. Begin with 35 grams, then adjust beverage yield as necessary, noting these rules:

Higher yield

- Decreased flavor intensity
- Longer extraction time
- Recommended when espresso lacks clarity

Lower yield

- Increased flavor intensity
- Longer extraction time
- Recommended when espresso lacks body

Brew Time

Brew time refers to the duration of extraction, including optional pre- and post-brew phases. With most espresso machines, extraction should last 25-30 seconds. Due to its slower introduction of water, Slayer may brew espresso in 40 seconds or more. Begin with 45 seconds (20s pre-brew + 25s brew), then adjust brew time as necessary, noting these rules:

Longer brew time

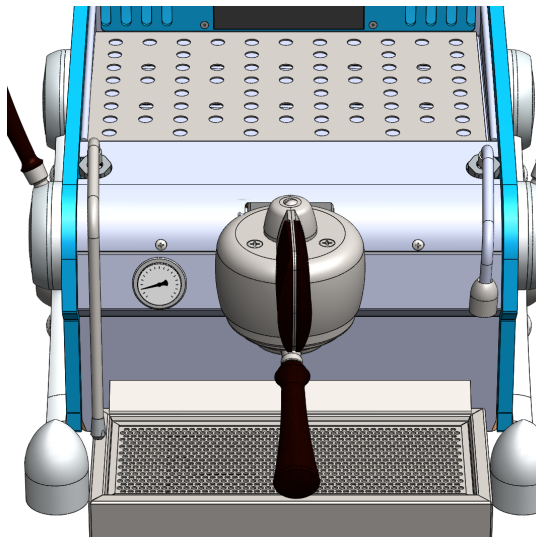
- Higher extraction
- Recommended when espresso tastes sour

Shorter brew time

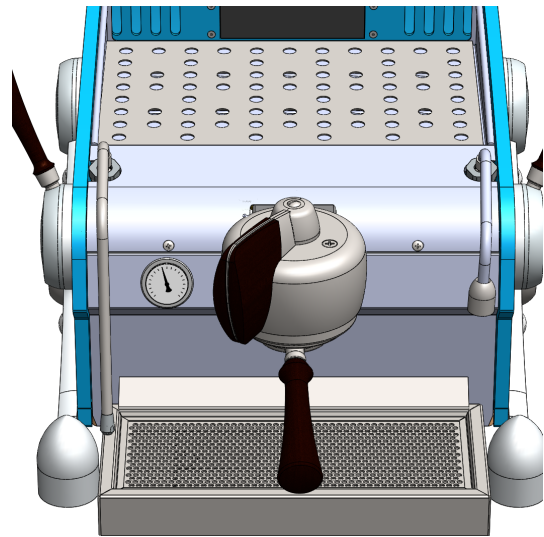
- Lower extraction
- Recommended when espresso tastes bitter

Preparing Espresso

Slayer's brew actuator allows for three positions: "off", "pre-brew", and "full brew". The grouphead is in the "off" position when the brew actuator is moved all the way right. The "pre-brew" setting is activated when the actuator is moved to the middle of the group. "Full brew" is achieved when the actuator is moved all the way left. The following guidelines represent a good starting point when first using Slayer. Coffee is a complex food item that differs from variety to variety, farm to farm, and even bean to bean. Changes in the aforementioned brewing parameters affect all coffees uniquely.



Pre-brew position



Full-brew position

Standard Shot

The procedure for brewing a standard shot is similar to that for other espresso machines:

1. Remove the portafilter from the grouphead and wipe the basket with a clean, dry towel.
2. Set the grind to the same degree of coarseness as you would for another espresso machine.
3. Grind and dose 19-21 grams of coffee into the portafilter.
4. Tamp coffee to approximately 30 pounds of pressure, briefly flush group, then lock the portafilter into the grouphead.
5. Move the brew actuator directly to the "full brew" position.
6. Allow the espresso to brew until the preferred extraction has been achieved (when blonding occurs, when the desired beverage yield has dispensed, or when the desired brew time has elapsed), then move the actuator to the "off" position.
7. Remove the portafilter from the grouphead and knock out spent coffee. Wipe the portafilter with a clean towel to remove grounds and oil.

8. Briefly move the brew actuator to the "full brew" position to purge grounds and oil from the dispersion screen. Move the grouphead to the "off" position and return the portafilter.

"Slayer Shot"

To brew a "Slayer shot", ensure that the flow rate is at the desired setting and the grinder is set finer than normal, then:

1. Remove the portafilter from the grouphead and wipe the basket with a clean, dry towel.
2. Grind and dose 19-21 grams of coffee into the portafilter.
3. Tamp the ground coffee to a depth of approximately 10mm, briefly flush group, then lock the portafilter into the grouphead.
4. Move the brew actuator into the center of the grouphead to activate pre-brew.
5. Pre-brew times will vary based on the dose, grind, flow rate, brew temperature, and characteristics of the coffee. The average Slayer pre-brew takes approximately 20 seconds. Watch the bottom of the portafilter basket shot mirror to see when the coffee puck becomes fully saturated.
6. The fully saturated portafilter basket will begin to drip. Immediately before espresso starts to flow consistently, move the brew actuator to the "full brew" position.
7. Allow the espresso to brew until the preferred extraction has been achieved (when blanding occurs, when the desired beverage yield has dispensed, or when the desired brew time has elapsed), then move the actuator to the "off" position.
8. Remove the portafilter from the grouphead and knock out spent coffee. Wipe the portafilter with a clean towel to remove grounds and oil.
9. Briefly move the brew actuator to the "full brew" position to purge grounds and oil from the dispersion screen. Move the grouphead to the "off" position and return the portafilter.

Extended Pre-Brew: Enhancing Sweetness

When espresso lacks sweetness, the pre-brew phase may be extended to extract more of the naturally-sweet oils:

1. Follow "Slayer Shot" steps 1-5 above, but allow the espresso to continue extracting in the Pre-Brew stage until it has dispensed up to 7 grams (0.25 ounces).
2. Move the brew actuator to the "full brew" position, then resume "Slayer Shot" steps 7-9.

Reduced Flow: Muting Acidity

Undesirable acidity can be softened by moving the actuator back to the middle position at the end of the extraction process:

1. Follow "Slayer Shot" steps 1-6.
2. When the machine dispenses approximately two-thirds of the desired volume, return the brew actuator to the middle position, then resume "Slayer Shot" steps 7-9.

"Bumped" Pressure: Increasing Acidity

If more acidity is desired, the full-brew stage can be briefly engaged before pre-brew:

1. Follow "Slayer Shot" steps 1-3.
2. Move the brew actuator to the "full brew" position until the grouphead pressurizes (less than 1 second), then quickly return the actuator to the "pre-brew" position.
 - ▶ Engaging "full brew" for longer than 1 second may cause the puck to choke, extending extraction and resulting in undesirable flavor.
3. Resume "Slayer Shot" steps 4-9, combining instructions for "Enhancing Sweetness" and "Reducing Acidity", if desired.

Steaming Milk

Slayer produces powerful steam by combining high pressure with restricted steam tip holes. Various steam tip options (numbered 0-5) are available to allow the barista to customize their steaming experience and milk texture. Unless another size is requested at the time of purchase, your Single Group will ship with steam tip #1.

Steam milk with the following steps.

1. Fill a cold pitcher with the desired volume of fresh milk.
2. Immediately before steaming milk, aim the steam wand toward the drip tray or into a towel and pull the steam actuator forward to release steam and purge condensation. Then, turn off the steam wand.
3. Submerge the steam tip in milk and turn on the steam wand.
4. Immediately move the pitcher down to expose the steam tip to the surface of the milk, incorporating fine air bubbles.
5. When the milk reaches body temperature, submerge the steam tip again, then tilt the pitcher to form a gentle whirlpool.
6. When the pitcher feels hot, turn off the steam wand.
 - ▶ The final milk temperature should be 65-68°C (150-155°F).
7. Wipe the steam wand with a damp cloth, removing all milk residue, then briefly turn on the steam wand to purge milk from the wand.

Dispensing Hot Water

The hot water spout is activated with the right-side actuator. Gently pull the handle forward to dispense water; return to the upright position to turn off water.

Hot water is drawn directly from the steam tank and its temperature cannot be manipulated independently. Frequent or heavy use of the hot water spout will result in reduced steam tank pressure and temperature, causing decreased steaming ability.

Adjust Flow Rate

Flow rate is controlled by a precision needle valve, which is located inside of the machine on top of the brew tank. Adjust the flow rate with the following steps.

Parts and tools:

- Empty 8-ounce (240-milliliter) vessel
- Gram scale

Procedure:

1. Remove portafilter from grouphead and set aside.
2. Briefly move the brew actuator to the "pre-brew" position, then to the "full brew" position for a few seconds before returning the grouphead to the "off" position.
3. Place a container on a scale underneath the grouphead and tare the scale to zero.
4. Move the brew actuator to the "pre-brew" position; a timer will automatically begin in the top-right corner of the digital display.
5. When the timer reaches 30 seconds, remove the container and scale, then move the brew actuator to the "off" position.
6. Weigh the container again without taring the scale to determine how much water was dispensed in the allotted time.
7. Use this weight to determine flow rate, which is expressed in these terms: x grams of water per 30 seconds.
 - ▶ Slayer recommends starting with a flow rate of approximately 40 grams of water per 30 seconds. The actual flow rate may be within a range of ± 2 grams of the desired flow rate.
 - ▶ To decrease the flow rate, turn the blue control knob on the needle valve clockwise.
 - ▶ To increase the flow rate, turn the blue control knob on the needle valve counter-clockwise.

IMPORTANT: Over-tightening the valve may break the needle inside. Only adjust the flow rate incrementally to avoid damage.

Adjust Brew Tank Temperature

At the Slayer studio, the brew tank temperature is set at 93°C (200°F). Adjust the brew tank temperature with the following steps.

1. Using the pad of your thumb, press the round touch sensor near the center of the screen to activate the menu.
2. Swipe from left to right until the "Brew Temperature" setting comes into view.
3. Press the round touch sensor to enter the "Brew Temperature" setting. "Up" and "down" arrows will appear on the right side of the screen.
4. Use the arrows to adjust the brew temperature in tenth-degree (0.1-degree) increments.
5. To confirm your new setting and continue menu navigation, press the round touch sensor. To confirm your new setting and exit menu navigation, move the brew actuator to the "pre-brew" or "full brew" position. The new temperature will be achieved and stable within 10 minutes.

Adjust Brew Pump Pressure

At the Slayer studio, the brew pump pressure is set at 9 bar. Actual brew pressure, as indicated by the pressure gauge on the face of your machine, will be influenced by incoming water pressure (line pressure) at your location. Adjust the brew pump pressure with the following steps.

1. Using the pad of your thumb, press the round touch sensor near the center of the screen to activate the menu.
2. Swipe from left to right until the "Brew Pump Pressure" setting comes into view.
3. Press the round touch sensor to enter the "Brew Pump Pressure" setting. "Up" and "down" arrows will appear on the right side of the screen.
4. Adjusting the brew pump pressure through the touchscreen interface is accomplished by increasing or decreasing a percentage value that represents brew pump pressure relative to maximum capacity. Use the arrows to adjust the value in one-percent (1%) increments between "0" and "100".
 - ▶ To increase the pressure, increase the value.
 - ▶ To decrease the pressure, decrease the value.
5. While still viewing the "Brew Pump Pressure" setting, set and test the pump pressure with the following steps.
 - a) Grind, dose, and tamp and espresso as usual, lock portafilter in grouphead, then move the brew actuator to the "full brew" position.
 - b) During "full brew", watch the brew pressure gauge and adjust the value from step 4 until the desired pressure is achieved.
 - c) To confirm your new setting, press the round touch sensor.
6. Reconfigure flow rate per instructions under "Using Slayer > Adjust Flow Rate" on page 29.

NOTE: Due to the unique method by which Slayer espresso machines read brew pressure, the pressure gauge will read 0 bar unless a loaded portafilter, blind insert, or Scace device provides back-pressure.

Adjust Steam Pressure

At the Slayer studio, the steam tank pressure is set at 1.5 Bar. If the steam is more or less powerful than you prefer, adjust with the following steps.

1. Using the pad of your thumb, press the round touch sensor near the center of the screen to activate the menu.
2. Swipe from left to right until the "Steam Pressure" setting comes into view.
3. Press the round touch sensor to enter the "Steam Pressure" setting. "Up" and "down" arrows will appear on the right side of the screen.
4. Use the arrows to adjust the steam pressure in tenth-bar (0.1-bar) increments.
 - ▶ To increase the pressure, increase the value.
 - ▶ To decrease the pressure, decrease the value.
 - ▶ Only make incremental adjustments to the pressure.
5. To confirm your new setting and continue menu navigation, press the round touch sensor. To confirm your new setting and exit menu navigation, move the brew actuator to the "pre-brew" or "full brew" position.

Adjust Power Management Tank Priority

Slayer's power management program heats only one tank at a time. Determining the program's bias will depend on the application and location of your machine. In most situations, "Brew" priority will be sufficient; in commercial environments, "Steam" priority may be preferred.

1. Using the pad of your thumb, press the round touch sensor near the center of the screen to activate the menu.
2. Swipe from left to right until the "Power Management" setting comes into view.
3. Press the round touch sensor to enter the "Power Management" setting. "Up" and "down" arrows will appear on the right side of the screen.
4. Use the arrows to specify "Brew" or "Steam" priority.
5. To confirm your new setting and continue menu navigation, press the round touch sensor. To confirm your new setting and exit menu navigation, move the brew actuator to the "pre-brew" or "full brew" position.

Adjust Pre-Brew Timer

The pre-brew timer allows the barista to minimize brew actuator movement while still making use of the pre-brew function. To prepare espresso with the pre-brew timer, see instructions under "Using Slayer > Using Pre-Brew Timer" on page 32.

Adjust the pre-brew timer with the following steps.

1. Using the pad of your thumb, press the round touch sensor near the center of the screen to activate the menu.
2. Swipe from left to right until the "Pre-Brew" setting comes into view.
3. Press the round touch sensor to enter the "Pre-Brew" setting. "Up" and "down" arrows will appear on the right side of the screen.
4. Use the arrows to adjust the pre-brew timer in one-second (1-second) increments, up to 30 seconds.
 - ▶ "0" value disables pre-brew timer function
5. To confirm your new setting and continue menu navigation, press the round touch sensor. Moving the brew actuator will NOT confirm your new setting or exit menu navigation.

Using Pre-Brew Timer

The pre-brew timer allows the barista to minimize brew actuator movement while still making use of the pre-brew function. It can be activated, deactivated, and programmed within the digital display; see instructions under "Using Slayer > Adjust Pre-Brew Timer" on page 31.

Use the pre-brew timer to prepare espresso with the following steps.

1. Activate and adjust the pre-brew timer by following the steps under "Using Slayer > Adjust Pre-Brew Timer" on page 31.
2. Grind, dose, and tamp coffee as usual, then lock the portafilter in the grouphead.
3. Move the brew actuator to the "full brew" position to begin extraction. Slayer will automatically initiate the pre-brew and full brew stages.
4. Allow the espresso to brew until the preferred extraction has been achieved (when blonding occurs, when the desired beverage yield has dispensed, or when the desired brew time has elapsed), then move the actuator to the "off" position.
5. Remove the portafilter from the grouphead and knock out spent coffee. Wipe the portafilter with a clean towel to remove grounds and oil.
6. Briefly move the brew actuator to the "full brew" position to purge grounds and oil from the dispersion screen. Move the grouphead to the "off" position and return the portafilter.

Access Advanced Settings

The "Advanced Setting" sub-menu has twelve (12) options. Access the sub-menu with the following steps, then follow the individual instructions below.

1. Using the pad of your thumb, press the round touch sensor near the center of the screen to activate the menu.

2. Swipe from right to left until the "Advanced Setting" sub-menu comes into view.
3. Press the round touch sensor to enter the "Advanced Setting" sub-menu.

Disable Touch?

The touch sensors can be temporarily disabled for safe cleaning of the glass screen. After completing the steps above to access the "Advanced Setting" sub-menu, disable touch with the following steps.

1. When the display reads, "Disable Touch? Enter to Start", press the round touch sensor to begin the "Disable touch" program.
2. The display will read, "Touch Disabled" and a timer will count down from 20 seconds. The remaining duration of the program will be indicated by "Enable in: x", where x represents the seconds until completion.
 - ▶ To cancel the program before it has finished and exit "Advanced Setting" sub-menu navigation, move the brew actuator to the "pre-brew" or "full brew" position.
3. Once the program has finished, the original query, "Disable Touch? Enter to Start", will reappear. To continue "Advanced Setting" sub-menu navigation, swipe from left to right. To exit menu navigation, move the brew actuator to the "pre-brew" or "full brew" position.

Bleed Group

An automated bleeding program is used to force trapped air from the group. While not typically required, this program may resolve stalling during pre-brew. After completing the steps above to access the "Advanced Setting" sub-menu, begin the "Bleed Group" program with the following steps.

1. Swipe from left to right until the "Bleed Group" program comes into view.
2. When the display reads, "Bleed Group OK = Begin", press the round touch sensor to begin the "Bleed Group" program.
3. The display will read, "Bleed Group" and a timer will count down from 10 seconds. The remaining duration of the program will be indicated by "Ends in: x", where x represents the seconds until completion.
 - ▶ The pump will run at maximum pressure, forcing air and water from the group and into the drain. Water will not dispense from the shower screen.
 - ▶ The program may not be cancelled once it has begun.
4. Once the program has finished, the first-level query, "PROGRAM MENU Swipe Below", will reappear. To continue menu navigation, swipe from left to right. To exit menu navigation, move the brew actuator to the "pre-brew" or "full brew" position.

Heater Control ON/OFF

The steam and brew tank heating elements may be activated or deactivated independently. After completing the steps above to access the "Advanced Setting" sub-menu, power on or off with the following steps.

1. Swipe from left to right until the "Heater Control ON/OFF" setting comes into view.
2. Press the round touch sensor to enter the "Heater Control ON/OFF" setting. "Up" and "down" arrows will appear on the right side of the screen.
3. The display will read, "BREW"; use the arrows to toggle between brew tank heater "on" and "off", then press the round touch sensor to confirm setting.
4. The display will read, "STEAM"; use the arrows to toggle between steam tank heater "on" and "off", then press the round touch sensor to confirm setting.
5. The "Heater Control ON/OFF" setting will reappear. To continue "Advanced Setting" sub-menu navigation, swipe from left to right. To exit menu navigation, move the brew actuator to the "pre-brew" or "full brew" position.

Temperature

Machine temperatures may be displayed in degrees Celsius or Fahrenheit. After completing the steps above to access the "Advanced Setting" sub-menu, specify preference with the following steps.

1. Swipe from left to right until the "Temperature" setting comes into view.
2. Press the round touch sensor to enter the "Temperature" setting. "Up" and "down" arrows will appear on the right side of the screen.
3. The display will read, "C" (Celsius) or "F" (Fahrenheit), which indicates the current setting. Use the arrows to toggle between "C" and "F", then press the round touch sensor to confirm setting.
4. The "Temperature" setting will reappear. To continue "Advanced Setting" sub-menu navigation, swipe from left to right. To exit menu navigation, move the brew actuator to the "pre-brew" or "full brew" position.

Set PID Values

Proportional-integral-derivative algorithm parameters assist in accurate water heating and may be adjusted individually. After completing the steps above to access the "Advanced Setting" sub-menu, adjust parameters with the following steps.

1. Swipe from left to right until the "Set PID Values" setting comes into view.
2. Press the round touch sensor to enter the "Set PID Values" setting. "Up" and "down" arrows will appear on the right side of the screen, as well as two (2) temperature readings: set temperature (top-right) and actual temperature (top-left).
 - ▶ The set brew temperature may not be changed at this time. To adjust, see instructions under "Using Slayer > Adjust Brew Tank Temperature" on page 30.
3. Three (3) values will display beneath the two (2) temperature readings. To change, press the touch sensor beneath each value, then use the arrows to adjust incrementally.
4. Press the round touch sensor to confirm settings.

5. The display will read, "Save? UP=Y, DN=N". To save changes, press the "up" arrow; to cancel changes, press the "down" arrow.
6. The "Set PID Values" setting will reappear. To continue "Advanced Setting" sub-menu navigation, swipe from left to right. To exit menu navigation, move the brew actuator to the "pre-brew" or "full brew" position.

IMPORTANT: To ensure optimal performance, the PID values are set at the studio to "200.2.0". Changing these values will affect the performance of Slayer's heating system and may cause overheating and damage. Do not manipulate without first reading this manual in its entirety, then consulting your Slayer representative, reseller, or qualified service personnel. Any changes to this value, whether intentional or accidental, can be corrected by restoring the factory tuned settings per the "Restore / Save Settings" instructions under "Using Slayer > Advanced Settings" on page 36.

Brew Temp Offset

An offset value is used to compensate for physical variations between temperature probes and to calibrate for accurate water heating. After completing the steps above to access the "Advanced Setting" sub-menu, adjust the brew temperature offset value with the following steps.

1. Swipe from left to right until the "Brew Temp Offset" setting comes into view.
2. Press the round touch sensor to enter the "Brew Temp Offset" setting. "Up" and "down" arrows will appear on the right side of the screen, as well as the real-time temperature reading (lower-left) and the current offset value (lower-right).
 - ▶ The set brew tank temperature may not be changed at this time. To adjust, see instructions under "Using Slayer > Adjust Brew Tank Temperature" on page 30 .
3. Use the arrows to adjust the brew temperature offset value in one-unit (1-unit) increments, then press the round touch sensor to confirm setting.
 - ▶ Each unit represents a 0.01°C change from the pre-calibrated settings of your machine. For example, an offset value of "28" indicates a variation of 0.28°C ($28 \times 0.01 = 0.28$) from pre-calibration.
 - ▶ The brew temperature offset may be a positive or negative value.
4. The "Brew Temp Offset" setting will reappear. To continue "Advanced Setting" sub-menu navigation, swipe from left to right. To exit menu navigation, move the brew actuator to the "pre-brew" or "full brew" position.

IMPORTANT: The brew temperature offset is set at the studio to ensure optimal performance. Do not manipulate without first reading this manual in its entirety, then consulting your Slayer representative, reseller, or qualified service personnel. Any changes to this value, whether intentional or accidental, can be corrected by restoring the factory tuned settings per the "Restore / Save Settings" instructions under "Using Slayer > Advanced Settings" on page 36.

Restore / Save Settings

User preferences and factory settings can be saved and recalled by four (4) programs in this sub-menu. After completing the steps above to access the "Advanced Setting" sub-menu, view the "Restore / Save Settings" sub-menu and begin programs with the following the steps.

1. Swipe from left to right until the "Restore / Save Settings" sub-menu comes into view.
2. Press the round touch sensor to enter the "Restore / Save Settings" sub-menu. "Up" and "down" arrows will appear on the right side of the screen.
3. Use the arrows to scroll through programs.
 - The "Save User Settings" program saves the current machine settings as user preferences.
 1. Press the round touch sensor to enter program.
 2. Use the arrows to toggle between "NO" and "YES", then use the round touch sensor to confirm desired action.
 - "NO" will be confirmed by returning to the "Restore / Save Settings" sub-menu.
 - "YES" will be confirmed by displaying "[DONE]", then returning to the "Restore / Save Settings" sub-menu.
 - The "Restore User Settings" program overwrites the current machine settings and restores saved user preferences.
 1. Press the round touch sensor to enter program.
 2. Use the arrows to toggle between "NO" and "YES", then use the round touch sensor to confirm desired action.
 - "NO" will be confirmed by returning to the "Restore / Save Settings" sub-menu.
 - "YES" will be confirmed by displaying "[DONE]", then returning to the "Restore / Save Settings" sub-menu.
 - The "Restore Factory Tuned Settings" program overwrites all user preferences and restores Slayer-recommended settings; tunings specific to your machine will remain intact.
 1. Press the round touch sensor to enter program.
 2. Use the arrows to toggle between "NO" and "YES", then use the round touch sensor to confirm desired action.
 - "NO" will be confirmed by returning to the "Restore / Save Settings" sub-menu.
 - "YES" will be confirmed by displaying "[DONE]", then returning to the "Restore / Save Settings" sub-menu.
 - The "Restore Factory Default Settings" program overwrites all user and Slayer preferences and restores hard-coded settings; tunings specific to your machine will be erased.
 1. Press the round touch sensor to enter program.
 2. Use the arrows to toggle between "NO" and "YES", then use the round touch sensor to confirm desired action.
 - "NO" will be confirmed by returning to the "Restore / Save Settings" sub-menu.
 - "YES" will be confirmed by displaying "[DONE]", then returning to the "Restore / Save Settings" sub-menu.

4. The "Restore / Save Settings" sub-menu will reappear. To continue "Advanced Setting" sub-menu navigation, swipe from left to right. To exit menu navigation, move the brew actuator to the "pre-brew" or "full brew" position.

Set Time / Date

Slayer's clock and calendar are displayed when the machine idles and referenced for the "Power Saver" program. After completing the steps above to access the "Advanced Setting" sub-menu, view the "Set Time / Date" sub-menu and adjust the time and date with the following steps.

1. Swipe from left to right until the "Set Time / Date" sub-menu comes into view.
2. Press the round touch sensor to enter the "Set Time / Date" sub-menu. The screen will first display three (3) settings: "12/24" (top-left), "HOUR" (top-center), and "MIN" (top-right). Your current selection is indicated by a pair of chevrons ("< >"); unselected settings are indicated by pairs of square brackets ("[]").
 - The "12/24" setting determines the status and format of the clock and has three (3) options: "OFF" (no time/date display), "12H" (12-hour format), and "24H" (24-hour format). Adjust with the following steps.
 1. Press the touch sensor beneath "12/24". "Up" and "down" arrows will appear on the right side of the screen.
 2. Use the arrows to cycle options, pause on desired option, then proceed to instructions for next setting: "HOUR".
 - If "OFF" is your desired option, press the round touch sensor to confirm and do not proceed to instructions for next settings. The "Set Time / Date" sub-menu will reappear. To continue "Advanced Setting" sub-menu navigation, swipe from left to right. To exit menu navigation, move the brew actuator to the "pre-brew" or "full brew" position.
 - The "HOUR" setting determines the clock's hour in the format selected above (12- or 24-hour). Adjust with the following steps.
 1. Press the touch sensor beneath "HOUR". "Up" and "down" arrows will appear on the right side of the screen.
 2. Use the arrows to adjust value, pause on desired value, then proceed to instructions for next setting: "MIN".
 - The "MIN" setting determines the clock's minute. Adjust with the following steps.
 1. Press the touch sensor beneath "MIN". "Up" and "down" arrows will appear on the right side of the screen.
 2. Use the arrows to adjust value, pause on desired value, then press the round touch sensor to confirm.
3. The screen will display three (3) additional settings: "MONTH" (top-left), "DAY" (top-center), and "YEAR" (top-right). Your current selection is indicated by a pair of chevrons ("< >"); unselected settings are indicated by pairs of square brackets ("[]").
 - The "MONTH" setting determines the calendar's month. Adjust with the following steps.

1. Press the touch sensor beneath "MONTH". "Up" and "down" arrows will appear on the right side of the screen.
2. Use the arrows to cycle options, pause on desired option, then proceed to instructions for next setting: "DAY".
- The "DAY" setting determines the calendar's day. Adjust with the following steps.
 1. Press the touch sensor beneath "DAY". "Up" and "down" arrows will appear on the right side of the screen.
 2. Use the arrows to cycle options, pause on desired option, then proceed to instructions for next setting: "YEAR".
- The "YEAR" setting determines the calendar's day. Adjust with the following steps.
 1. Press the touch sensor beneath "YEAR". "Up" and "down" arrows will appear on the right side of the screen.
 2. Use the arrows to cycle options, pause on desired option, then press the round touch sensor to confirm.
4. The "Set Time / Date" sub-menu will reappear. To continue "Advanced Setting" sub-menu navigation, swipe from left to right. To exit menu navigation, move the brew actuator to the "pre-brew" or "full brew" position.

Set Power Saver On-Off Times

Slayer's "Power Saver" program prompts the machine to toggle between "ready" (heated for use) and "standby" (reduced power) per the user-input schedule(s). Four (4) separate schedules are available for programming: two (2) per day for weekdays (Monday through Friday) and two (2) per day for weekends (Saturday and Sunday). This allows you to program Slayer to be ready for use in the morning, after work, and so on. After completing the steps above to access the "Advanced Setting" sub-menu, view the "Power Saver On-Off Times" sub-menu and adjust the schedule with the following steps.

1. Swipe from left to right until the "Set Power Saver On-Off Times" sub-menu comes into view.
2. Press the round touch sensor to enter the "Set Power Saver On-Off Times" sub-menu. "Up" and "down" arrows will appear on the right side of the screen. The screen will first display the schedule for "MF1", one of two weekday power-saver programs. Inside the "MF1" schedule, the screen will display two (2) settings: "START" (time of day) and "LENGTH" (time duration). Your current selection is indicated by a pair of chevrons ("< >"); unselected settings are indicated by pairs of square brackets ("[]"). Adjust with the following steps.
 1. Use the arrows to adjust the "START" value, pause on desired value, then proceed to instructions for next setting: "LENGTH".
 - ▶ The "START" value indicates the time of day at which the machine will be ready for use. Because the machine requires time to heat, the actual time at which it exits standby and readies itself will be earlier than this programmed value. Slayer will be ready to use at or before the specified time.

2. Press the round touch sensor to select the "LENGTH" setting. An "END" value will appear (top-right).
 - ▶ The "LENGTH" value indicates the time duration for which the machine will remain ready for use and is adjustable in 15-minute increments.
 - ▶ The "END" value indicates the time of day at which the machine will enter the power-saving standby mode.
3. Use the arrows to adjust the "LENGTH" value, pause on desired value, then press the round touch sensor to confirm "MF1" schedule and proceed. The screen will then display the schedule for "MF2", the second weekday power-saver program.
 - ▶ If an "MF1" schedule is not inputted, the screen will not display the option to create an "MF2" schedule.
3. Adjust the "MF2" schedule with the same procedure used for adjusting "MF1", then press the round touch sensor to confirm. The screen will then display the schedule for "SS", the first weekend power-saver program.
4. Adjust the "SS3" schedule with the same procedure used for adjusting "MF1" and "MF2", then press the round touch sensor to confirm. The screen will then display the schedule for "SS4", the second weekend power-saver program.
 - ▶ If an "SS3" schedule is not inputted, the screen will not display the option to create an "SS4" schedule.
5. Adjust the "SS4" schedule with the same procedure used for adjusting "MF1", "MF2", and "SS3", then press the round touch sensor to confirm.
6. The "Set Power Saver On-Off Times" sub-menu will reappear. To continue "Advanced Setting" sub-menu navigation, swipe from left to right. To exit menu navigation, move the brew actuator to the "pre-brew" or "full brew" position.
7. Slayer will now toggle between "ready" (heated for use) and "standby" (reduced power) per the user-input schedule(s).
8. At any time, you may exit the power-saving standby mode and initiate normal heating by moving the brew actuator to the "pre-brew" or "full brew" position. Slayer will temporarily exit "standby" and will be ready for use in 10-15 minutes.
 - ▶ If the programmed schedule still applies, Slayer will reenter "standby" after one (1) hour of inactivity.
 - ▶ This will disrupt the programmed schedule on this day only and will not affect future programmed schedules.

Slayer Info

Your Slayer espresso machine's serial number and software version may be viewed on the "Slayer Info" page. After completing the steps above to access the "Advanced Setting" sub-menu, view the "Slayer Info" page with the following steps.

1. Swipe from left to right until the "Slayer Info" page comes into view.
2. Press the round touch sensor to enter the "Slayer Info" page. The screen will display your machine's serial number and software version.

3. To exit the "Slayer Info" page and continue "Advanced Setting" sub-menu navigation, swipe from left to right. To exit menu navigation, move the brew actuator to the "pre-brew" or "full brew" position.

Enter to reset

The reset program reboots the machine and reinitializes the software. This has the same effect as unplugging, then returning the power source and is useful when the plug is not easily accessible. After completing the steps above to access the "Advanced Setting" sub-menu, begin the reset program with the following steps.

1. Swipe from left to right until the "Enter to reset" program comes into view.
2. Press the round touch sensor to begin the reset program. A timer will appear, count down from "30", and the machine will power down.
 - ▶ To cancel the reset program before the timer completes, press the round touch sensor.
3. Within several seconds, Slayer will reboot and normal operation may be resumed.

Cleaning & Preventative Maintenance

Keeping your machine clean and properly maintained is essential to ensuring espresso quality and equipment longevity. Espresso machines require both daily cleaning and ongoing periodic maintenance. The frequency with which these tasks should be completed will depend on the location and use of your espresso machine. Except where stated otherwise, the following instructions assume heavy use in a commercial setting.

CAUTION: Slayer and its parts may be very hot. Please read the Important Safety Information section prior to using Slayer and take the necessary steps to protect yourself and others.

Daily

- *Body*
- *Grouphead*
- *Steam Wand*

Every 1-2 Months

- *Replacing Shower Screen*
- *Replacing Portafilter Gasket*

Every 6 Months

- *Before Maintenance Procedures*
- *Draining Steam Tank*
- *Adjusting Brew Actuator Tension*
- *After Maintenance Procedures*

Every 12-18 Months

- *Before Maintenance Procedures*
- *Replacing Steam and Hot Water Valve Pin O-Rings*
- *Replacing Shoulder Bolt Shims*
- *Replacing Expansion Valve*
- *Replacing Anti-Suction Valve*
- *Replacing Valve Seals*
- *Replacing Water Level Probe*
- *Replacing Brew Actuator Bearing*
- *After Maintenance Procedures*

Wood Care

- *Overview*

Daily

Body

Parts and tools:

- Soft, clean towel
- Non-abrasive cleaner, e.g. window cleaner (optional)

Procedure:

Use a soft, clean towel to wipe the surfaces of the machine. Do not use abrasive cleaners. Small amounts of window cleaner may be used on the stainless steel components. If your Slayer has wood panels, please refer to the "Wood Care" section.

Grouphead

Cleaning and backflushing the groupheads prevents the build up of coffee oils. In a commercial setting (high volume), backflush twice daily: once with water and once with an approved espresso machine cleaning powder. In a home (low volume), backflush weekly with an approved espresso machine cleaning powder.

To maximize efficiency and lengthen the life of wearable parts, Slayer recommends keeping two (2) sets of dispersion screens and screws on hand. Alternate between sets for each "End-of-Day Backflush" (see below).

IMPORTANT: Machines equipped with Teflon-coated dispersion screens require maintenance tasks that may be unfamiliar to you. If using Teflon-coated screens, note the following warnings before cleaning. *Failure to do so will result in the deterioration of the Teflon coating.* If you are uncertain about the type of screen(s) installed on your machine, contact Slayer before proceeding with any maintenance tasks.

Cleaning Guidelines for Teflon-Coated Dispersion Screens

- To clean screen, remove from grouphead, rinse with hot water, and wipe with a soft towel. Clean at least twice daily in a commercial setting (high volume) or once weekly in a home (low volume).
- Do not scrub Teflon-coated screen with any coarse material, such as a plastic brush.
- Do not soak Teflon-coated screen in detergent.
- Do not backflush grouphead with detergent while Teflon-coated screen is in place.
 - When backflushing with detergent, remove Teflon-coated screen and replace with a non-coated screen. Do not attempt to backflush grouphead without a screen in place.

General Group Cleaning

Recommended as part of every backflush cycle, or as needed.

Parts and tools:

- Cleaning brush or towel
- Flat-head screwdriver
- Portafilter with basket removed

Procedure:

1. Use a cleaning brush or towel to scrub the portafilter gasket and loosen oil and coffee grounds.
2. Remove the dispersion screw and screen with a flat-head screwdriver and rinse with clean water.
 - ▶ Ensure that the dispersion screw holes remain clear of coffee grounds, as they may otherwise damage internal parts of the grouphead.
3. Use a clean, damp towel to wipe oil and grounds from the face and sides of the dispersion block, as well as the portafilter body.
4. Return the clean dispersion screw and screen to the grouphead.
 - ▶ *CAUTION: failure to reinstall the dispersion screw and screen before next use may cause the grouphead to clog. Do not attempt to brew espresso or backflush grouphead before the dispersion screw and screen have been correctly installed.*
5. Thoroughly rinse portafilter with hot water, insert basket, and lock in grouphead.

Backflushing with Water Only

Recommended once daily for commercial settings; optional for homes. May be performed when Teflon-coated dispersion screens are installed. (See "Cleaning Guidelines for Teflon-Coated Dispersion Screens", above.)

When activated, the group cleaning program will automatically perform backflush cycles to clean the group.

Parts and tools:

- Cleaning brush or towel
- Flat-head screwdriver
- Blind portafilter insert
- Portafilter

Procedure:

1. Complete "General Group Cleaning" steps 1-4 above.
2. Replace portafilter basket with blind insert and lock in grouphead.
3. Press the round touch sensor near the center of the screen to activate the menu.
4. Swipe from left to right until the "Group Cleaning" setting comes into view.
5. Press the round touch sensor to activate cleaning program. A timer will appear, count down from "5", and the program will begin. As the program runs, another timer will appear to indicate its progress, counting down from "150".

6. After cleaning program, follow prompt on screen, removing portafilter from grouphead and pressing the round touch sensor to continue. The group will begin rinsing automatically and a timer will appear, counting down from "15".
7. Follow prompt on screen, removing portafilter from grouphead and pressing the round touch sensor to continue.
8. Remove blind insert from portafilter and use a clean, damp towel to wipe oil and grounds from portafilter body.
9. Thoroughly rinse portafilter with hot water, insert basket, and lock in grouphead.

Backflushing with Espresso Machine Cleaner

Recommended once daily for commercial settings; once weekly for homes. *Do not perform when Teflon-coated dispersion screens are installed.* (See "Cleaning Guidelines for Teflon-Coated Dispersion Screens", above.)

Parts and tools:

- Replacement shower screens (part #46000-50070)
- Replacement dispersion screws (part #46000-50080)
- Cleaning brush or towel
- Flat-head screwdriver
- Approved espresso machine cleaner
- Blind portafilter insert
- Portafilter

Procedure:

1. Complete "General Group Cleaning" steps 1-3 above.
2. Soak dispersion screw and screen overnight in a solution of hot water and approved espresso machine cleaning powder. Later, rinse thoroughly with clean water.
 - ▶ Only for non-coated screens; do not soak Teflon-coated screen in detergent. (See "Cleaning Guidelines for Teflon-Coated Dispersion Screens", above.)
3. Install a clean, second set of dispersion screw and non-coated screen.
 - ▶ *CAUTION: failure to reinstall the dispersion screw and screen before next use may cause the grouphead to clog. Do not attempt to brew espresso or backflush grouphead before the dispersion screw and screen have been correctly installed.*
4. Remove the basket and portafilter spring from the portafilter and soak overnight with the dispersion screw and screen. Later, rinse thoroughly with clean water.
 - ▶ *CAUTION: do not soak portafilters with wood handles attached. Exposure to water and/or chemicals may cause wood to crack or warp.*
5. Place the included blind insert in a portafilter, add approved espresso machine powder, and lock in grouphead.
6. Press the round touch sensor near the center of the screen to activate the menu.

7. Swipe from left to right until the "Group Cleaning" setting comes into view.
8. Press the round touch sensor to activate cleaning program. A timer will appear, count down from "5", and the program will begin. As the program runs, another timer will appear to indicate its progress, counting down from "150".
 - ▶ Only for non-coated screens; do not backflush grouphead with detergent while Teflon-coated screen is in place. (See "Cleaning Guidelines for Teflon-Coated Dispersion Screens", above.)
9. After cleaning program, follow prompt on screen, removing portafilter from grouphead and pressing the round touch sensor to continue. The group will begin rinsing automatically and a timer will appear, counting down from "15".
10. Follow prompt on screen, removing portafilter from grouphead and pressing the round touch sensor to continue.
11. Remove blind insert from portafilter and use a clean, damp towel to wipe oil and grounds from portafilter body.
12. Thoroughly rinse portafilter with clean, hot water.
13. Later, after soaking, reattach portafilter spring and basket and lock portafilter in grouphead.

Steam Wand

After steaming milk, clean the exterior of the steam wand by wiping it thoroughly with a damp towel, then clear its interior by briefly allowing steam to flow.

If the steam wand tips clog, soak in hot water for several minutes, then briefly engage steam with wand submerged. For tough clogs, use an approved espresso machine steam wand cleaner.

Every 1-2 Months

Replacing Shower Screen

➔ vimeo.com/20084652 (password: prebrewpressure)

The dispersion screen may become bent or damaged and should be replaced periodically. Ideally, the screen will sit firmly against the metal backing. If a gap forms, replace the dispersion screen.

Parts and tools:

- Replacement shower screen (part #46000-50070)
- Flat-head screwdriver

Procedure:

1. Complete steps 1-3 of "General Group Cleaning" under "Grouphead".
2. Discard old dispersion screen.

3. Install new screen and secure with the screw from step 1, taking care not to over-tighten. Tighten the screw with your fingers until it is secure, then rotate an additional 90 degrees (1/4 turn) with the screwdriver.
 - ▶ *CAUTION: failure to reinstall the dispersion screw and screen before next use may cause the grouphead to clog. Do not attempt to brew espresso or backflush grouphead before the dispersion screw and screen have been correctly installed.*
 - ▶ *For additional assistance with this procedure, refer to parts diagrams on pages 58-74.*

Replacing Portafilter Gasket

➔ vimeo.com/20084652 (password: prebrewpressure)

The portafilter gasket forms a seal between the portafilter and the grouphead, preventing leaks. Over time, the portafilter gasket will become hard and lose its seal. If it becomes difficult to insert the portafilter or if dripping occurs around the portafilter body while brewing, replace the portafilter gasket.

Parts and tools:

- Replacement 6.1mm portafilter gasket (part #46000-56091)
- Flat-head screwdriver
- Pick or awl
- Cleaning brush or towel

Procedure:

1. Complete steps 1-3 of "General Group Cleaning" under "Grouphead".
2. Use a pick or awl to remove the old portafilter gasket, pressing the pick into the gasket and pulling downwards. If the gasket breaks into small pieces, continue picking until the entire gasket has been removed.
3. Insert new portafilter gasket in such a way that the flat side touches the grouphead and the round side is visible from the bottom. Gently press the gasket into place, then use a screwdriver, pick, or awl to secure it in place.
4. Return the clean dispersion screw and screen to the grouphead.
 - ▶ *CAUTION: failure to reinstall the dispersion screw and screen before next use may cause the grouphead to clog with coffee particles. Do not attempt to brew espresso before the dispersion screw and screen have been correctly installed.*
 - ▶ *For additional assistance with this procedure, refer to parts diagrams on pages 58-74.*

Every 6 Months

Before Maintenance Procedure

Before starting the 6-month maintenance procedure, make the following preparations.

1. Turn off steam tank heating element. Read "Step 8: Turn On Heating Elements" on page 15 for help completing this step.
2. Turn off machine by disconnecting its power source.
3. Turn off water supply, either at the source or at the filtration system.
4. Pull steam actuator forward, into the "on" position, to drain steam.
5. Lift to remove cup tray assembly.

Draining Steam Tank

As steam is produced and exits the wand, minerals in the water are left behind build up inside the boiler. The steam tank needs to be drained periodically to remove these excess minerals. For assistance with this procedure, refer to parts diagrams on pages 58-74.

Parts and tools:

- Wrench

Procedure:

1. Per previous steps under "Before Maintenance Procedures", ensure that the steam tank heating element is off, the machine is disconnected from its power source and water supply, the steam tank is emptied of steam, and the cup tray assembly is removed. Then, locate the shutoff valve on the lower left side of the steam boiler.
2. Use a wrench to partially open the shut-off valve. Water will begin to drain from the tank, through the drip tray and drain tube.
 - ▶ *CAUTION: Do not fully open the shut-off valve or else water and steam will exit violently.*
 - ▶ *For additional assistance with this procedure, refer to parts diagrams on pages 58-74.*

Adjusting Brew Actuator Tension

➔ vimeo.com/20216962 (password: prebrewpressure)

If the brew actuator becomes loose, tighten with the following steps.

Parts and tools:

- Flat-head screwdriver
- Allen key

Procedure:

1. Per previous steps under "Before Maintenance Procedures", ensure that the machine is disconnected from its power source and water supply.
2. Use a flat-head screwdriver to remove the lock screw from the top of the brew actuator.
3. Tighten the locking nut with an allen key. Test tightness by moving the actuator back and forth.
4. Adjust locking nut until desired tension is achieved.

5. Replace lock screw.
 - *For additional assistance with this procedure, refer to parts diagrams on pages 58-74.*

After Maintenance Procedures

After completing the 6-month maintenance procedure, make the following preparations to resume normal machine operation.

1. Install cup tray assembly.
2. Turn on water supply.
3. Move the steam actuator to the "on" position.
4. Reconnect machine to power source; tank will automatically begin to fill.
5. Filling is complete when the pump motor ceases to work and a "click" is heard. When tank is full, turn on steam tank heating element.
6. Heating is complete when steam begins to flow from the steam wand. When the machine is heated, move the actuator into the "off" position.
7. Lift to remove cup tray assembly and check the inside of the machine for leaks or collected water. If any leaks are discovered, immediately disconnect power source. Do not resume operation until leaks have been resolved.

Every 12-18 Months

Before Maintenance Procedures

Before starting the 12-month maintenance procedure, make the following preparations.

1. Turn off steam tank and brew tank heating elements. Read "Step 8: Turn On Heating Elements" on page 15 for help completing this step.
2. Turn off machine by removing its power source.
3. Turn off water supply, either at the source or at the filtration system.
4. Pull steam actuator forward, into the "on" position, to drain steam.
5. Lift to remove cup tray assembly.
6. Use phillips-head screwdriver to loosen the four (4) screws on the curved front panel; remove panel.

Replacing Steam and Hot Water Valve Pin O-Rings

➔ vimeo.com/144518070 (password: prebrewpressure)

When the steam actuator is moved into the "on" position, it pushes a brass pin into the steam valve, which causes the valve to open and allows steam to flow. The two (2) o-rings on the steam valve pin should be replaced every 12-18 months.

Parts and tools:

- Replacement steam/hot water valve pin o-rings (part #46000-53090)

- Flat-head screwdriver
- 9/16" socket wrench
- Pliers
- Pick or awl

Procedure:

1. Per previous steps under "Before Maintenance Procedures", ensure that all heating elements are off, the machine is disconnected from its power source and water supply, the steam tank is emptied of steam, and both the cup tray assembly and curved front panel are removed.
 - ▶ When not proceeding to other preventative maintenance tasks, removal of curved front panel may be skipped.
2. Begin with one actuator assembly, steam or hot water: use a flat-head screwdriver to loosen the shoulder bolt. Once loose, carefully remove the shoulder bolt, ensuring that the steam actuator assembly does not fall.
3. Lift to remove the actuator assembly.
4. Use pliers to remove the valve pin.
5. Use a pick or awl to remove the o-rings from the valve pin and discard them; install new o-rings.
6. Rub Slayer lubricant on the pin and return the pin to the valve.
7. Reattach the actuator hub and shoulder bolt, tightening with a flat-head screwdriver.
 - ▶ Skip this step if proceeding to other preventative maintenance tasks.
8. Repeat steps 1-6 with the other actuator hub, steam or hot water.
 - ▶ *For additional assistance with this procedure, refer to parts diagrams on pages 59-74.*

Replacing Shoulder Bolt Shims

➔ vimeo.com/144518070 (password: prebrewpressure)

The shoulder bolt's shims create a snug fit between the steam and hot water actuator hubs and the side panel. Whenever one of the actuator hubs is removed, replace the shims.

Parts and tools:

- Additional shoulder bolt shims (part #46000-53150)
- Flat-head screwdriver
- 9/16" socket wrench

Procedure:

1. Per previous steps under "Before Maintenance Procedures", ensure that all heating elements are off, the machine is disconnected from its power source and water supply, the steam tank is emptied of steam, and both the cup tray assembly and curved front panel are removed.
 - ▶ When not proceeding to other preventative maintenance tasks, removal of curved front panel may be skipped.

2. Begin with one actuator assembly, steam or hot water: use a flat-head screwdriver to loosen the shoulder bolt. Once loose, carefully remove the shoulder bolt, ensuring that the steam actuator assembly does not fall.
3. Lift to remove the actuator assembly.
4. Remove the shims from the shoulder bolt and discard them; install new shims.
5. Rub Slayer lubricant on the inside face of the actuator hub, the nylon ramp inside of the actuator hub, and all corresponding contact points on the x-frame.
6. Reattach the actuator hub and shoulder bolt, confirming fit by wiggling the hub. If the hubs do not fit snugly, remove the shoulder bolt and actuator hub and add more shims.
 - Skip this step if proceeding to other preventative maintenance tasks.
7. Repeat step 6 until hub fits snugly.
8. Repeat steps 2-7 with the other actuator assembly, steam or hot water.
 - *For additional assistance with this procedure, refer to parts diagrams on pages 59-74.*

Replacing Expansion Valve

➔ vimeo.com/20211342 (password: prebrewpressure)

When the expansion valve seal wears, leaking may occur. This will lead to temperature loss in the brew tank and premature failure of the water filtration system. To diagnose a worn expansion valve, look for excessive water flow in the expansion valve drain tube.

Parts and tools:

- Replacement expansion valve (part #42000-10020)
- Replacement copper gasket (part #46000-50150)
- Wrench
- Teflon tape

Procedure:

1. Per previous steps under "Before Maintenance Procedures", ensure that all heating elements are off, the machine is disconnected from its power source and water supply, and both the cup tray assembly and curved front panel are removed.
2. Locate the expansion valve on top of the steam tank, then disconnect silicone tube from the expansion valve.
3. Use a wrench to remove the expansion valve from the steam tank and discard.
4. Apply Teflon tape to the threads of the new expansion valve and fit with a new copper gasket.
5. Install a new expansion valve, tightening with a wrench.
6. Reconnect the silicone tube.
 - *For additional assistance with this procedure, refer to parts diagrams on pages 59-74.*

Replacing Anti-Suction Valve

The anti-suction valve prevents a vacuum from forming in the steam tank, which would suck milk into the steam tank.

Parts and tools:

- Replacement anti-suction/vacuum valve (part #46000-50140)
- Replacement copper gasket (part #46000-50150)
- Wrench
- Teflon tape

Procedure:

1. Per previous steps under "Before Maintenance Procedures", ensure that all heating elements are off, the machine is disconnected from its power source and water supply, the steam tank is emptied of steam, and the cup tray assembly is removed.
2. Locate the anti-suction valve on top of the steam tank, then use a wrench to remove it. Note the placement of the attached copper gasket, then discard both the gasket and the old valve.
3. Apply Teflon tape to the threads of a new anti-suction valve and fit with a new copper gasket.
4. Install a new anti-suction valve, tightening with a wrench.
 - *For additional assistance with this procedure, refer to parts diagrams on pages 59-74.*

Replacing Steam and Hot Water Valve Seals

➔ vimeo.com/20335705 (password: prebrewpressure)

If steam leaks from either the tip or rotating base of the steam wand or hot water wand, replace the valve's rubber seals, o-rings, and Teflon bushing.

Parts and tools:

- Replacement steam seat gasket (part #46000-53100)
- Replacement Teflon bushing (part #46000-53060)
- Replacement Teflon bushing o-ring (part #46000-53050)
- Replacement Teflon steam seal (part #46000-53110)
- Crescent wrench
- 9/16" wrench
- Wrench
- Pick or awl
- Slayer lubricant
- Needle-nose pliers
- Teflon tape

Procedure:

1. Per previous steps under "Before Maintenance Procedures", ensure that all heating elements are off, the machine is disconnected from its power

- source and water supply, the steam tank is emptied of steam, and both the cup tray assembly and curved front panel are removed.
2. Begin with one actuator assembly, steam or hot water: remove the tube that connects the steam tank to the steam or hot water valve.
 3. Loosen and remove the wand tip.
 4. Use a wrench to loosen the valve nut, then remove the nut and the wand.
 - ▶ A Teflon bushing sits inside of the ball joint; ensure that it is not lost.
 5. Use a pick or awl to remove the Teflon steam seal from the underside of the steam wand valve nut.
 6. Clean the inside of the nut and insert a new Teflon steam seal.
 7. If the Teflon bushing appears dark or flattened, discard it and install a new bushing and o-ring, applying Slayer lubricant.
 8. Reattach wand, tightening with a wrench.
 9. Use a flat-head screwdriver to loosen the shoulder bolt. Once loose, carefully remove the shoulder bolt, ensuring that the steam actuator assembly does not fall.
 10. Lift to remove the steam actuator assembly.
 11. Use wrench to secure valve body; use second wrench to remove the valve's large, brass nut.
 12. Remove spring from valve body and use needle nose pliers to remove the seat from the valve body.
 13. Use a pick or awl to separate seat gasket from seat; insert new seat gasket.
 14. Reinsert seat and spring in the steam valve.
 15. Apply Teflon tape to the threads of the brass nut.
 16. Use wrench to secure valve body; use second wrench to tighten brass nut.
 17. Reconnect the tube to the valve and steam tank.
 18. Reattach the actuator assembly and shoulder bolt, tightening with a flat-head screwdriver.
 19. Repeat steps 2-18 with the other actuator assembly, steam or hot water.

Replacing Water Level Probe

Parts and tools:

- Replacement water level probe (part #30004-50170)
- Wrench
- Teflon tape

Procedure:

1. Per previous steps under "Before Maintenance Procedures", ensure that all heating elements are off, the machine is disconnected from its power source and water supply, the steam tank is emptied of steam, and the cup tray assembly is removed.
2. Locate the water level probe on top of the steam tank, then remove wire from probe and set aside.
3. Use a wrench to loosen the smaller of the two nuts at the base of the probe, then pull probe to remove.

4. Install new water level probe, then tighten small nut to secure.
5. Reconnect wire to probe.
 - ▶ *For additional assistance with this procedure, refer to parts diagrams on pages 59-74.*

Replacing Brew Actuator Bearing

Parts and tools:

- Replacement brew actuator bearing (oilite bushing, part #10000-16200)
- Flat-head screwdriver
- 1/4" allen key
- Phillips-head screwdriver

Procedure:

1. Per previous steps under "Before Maintenance Procedures", ensure that all heating elements are off and the machine is disconnected from its power source.
2. Use a phillips-head screwdriver to loosen and remove the three (3) bolts from the brew cap; set aside.
3. Carefully, lift to remove brew cap.
 - ▶ Several small parts sit underneath the brew cap: one (1) stainless finder washer, one (1) bayonet bolt, one (1) tongue assembly, one (1) disc spring, one (1) valve stem, and three (3) group cover spacers. Note their original positions and ensure that they are not moved.
4. A plastic spacer is set in the underside the brew cap; remove and set aside.
5. Use a flat-head screwdriver to loosen and remove the lock screw from the top of the brew actuator; set aside.
6. Loosen and remove the locking nut with a 1/4" allen key; set aside.
 - ▶ A spacer sits underneath the locking nut; ensure that it is not lost.
7. Lift to remove brew actuator; set aside.
 - ▶ A Teflon gasket sits underneath the brew actuator; remove and set aside.
8. Flipping over the brew cap, use a blunt object (e.g. rubber mallet) to gently tap the actuator bearing (oilite bushing) until it has been removed; discard.
9. Install replacement brew actuator bearing.
10. Reattach brew actuator to brew cap with the following steps.
 - a) Place Teflon gasket (from step 6) on brew actuator bearing.
 - b) Place brew actuator on brew cap, pressing through Teflon gasket and brew actuator bearing.
 - c) Place spacer (from step 5) inside the top of the brew actuator.
 - d) Install locking nut (from step 5) and tighten with a 1/4" allen key.
 - e) Install lock screw (from step 4) and tighten with a flat-head screwdriver.
11. Place plastic spacer (from step 3) on top of stainless finder washer (from step 2).
12. Carefully, place brew cap on grouphead.

13. Reattach brew cap to grouphead with three (3) bolts, tightening with a phillips-head screwdrivers.
 - ▶ *For additional assistance with this procedure, refer to parts diagrams on pages 59-74.*

After Maintenance Procedures

After completing the 12-month maintenance procedure, make the following preparations to resume normal machine operation.

1. Install cup tray assembly.
2. Use phillips-head screwdriver and screws to reinstall curved front panel.
3. Turn on water supply, either at the source or at the filtration system.
4. Move steam actuator to the "on" position.
5. Reconnect machine to power source; tank will automatically begin to fill.
6. Filling is complete when the pump motor ceases to work and a "click" is heard. When tank is full, turn on steam tank heating element.
7. The machine is heated when steam begins to flow from the steam wand; at this point, move the actuator into the "off" position.
8. Lift to remove cup tray assembly and check the inside of the machine for leaks or collected water.

Wood Care

Overview

Keep all wood components dry and away from harsh elements. Use a soft, dry towel to wipe the wood clean. For tougher messes, use a slightly damp towel, then promptly dry the wood. Do not use chemicals or cleaning agents. Moisture and chemicals may cause the wood to warp or crack.

If the wood begins to look aged and dry, rub a small amount of tung oil into the wood with a clean, soft towel. Allow the oil to sink into the wood for at least five minutes, then wipe the remaining oil off with a dry towel.

Troubleshooting

Use this list of common symptoms to diagnose and resolve issues you experience with your espresso machine. Slayer's instructional videos are password-protected; access them with the code "prebrewpressure".

<i>Symptom</i>	<i>Possible cause(s)</i>	<i>Instructional video</i>
Bent gauge	Needle valve closed	vimeo.com/20345156
Brew tank cold; steam tank normal	Tripped thermostat or faulty probes and/or PIDs OR faulty expansion valve	vimeo.com/20211342
Both tanks cold	Tripped breaker and/or white power switch off	vimeo.com/20219480
High pressure during pre-brew	Coffee ground too fine OR flow rate set too fast	vimeo.com/20293720
Hissing from machine's rear-left	Leaking pressure release valve	vimeo.com/20309382
Steam pressure low; brew pressure normal	Faulty check valve	vimeo.com/20208524
Steam pressure low and/or slow refill	Dirty probe	vimeo.com/20303179
Fast flow during pre-brew	Faulty switch and/or bad connection to Molex connector and/or missing magnet	vimeo.com/20296673
Pump runs continuously	Loose switch and/or brew actuator not in "off" position	vimeo.com/20300413
Steam tank overfills	Faulty solenoid valve and/or dirty probe and/or bad connection to probe	vimeo.com/20306832
Dripping group screens	Worn o-rings at valve insert and/or lower valve stem	vimeo.com/19575557
Dripping steam wand	Worn steam cup seal and/or o-rings	vimeo.com/20335705
Leaking group cap and/or bayonet	Worn o-rings at upper valve stem	vimeo.com/20218411
Leaking steam actuator hub	Worn steam valve pin o-rings	vimeo.com/20114980
No flow during pre-brew	Needle valve closed	vimeo.com/20220777

Video Guides

Use these videos to learn common procedures for your espresso machine. Some of Slayer's instructional videos are password-protected; access them with the code "prebrewpressure".

<i>Procedure</i>	<i>Instructional video</i>
Adjusting pre-brew flow rate	vimeo.com/20121811
Replacing grouphead seals and/or screens	vimeo.com/20084652
Replacing steam valve pin	vimeo.com/20114980
Adjusting steam actuator tension	vimeo.com/20114980
Adjusting brew actuator tension	vimeo.com/20216962
Disassembling machine	https://www.dropbox.c

Spare Parts

The following parts are recommended for properly servicing Slayer. *The Basic Kit is required for completing basic preventative maintenance tasks;* the Advanced Kit is for more complex (and less common) procedures.

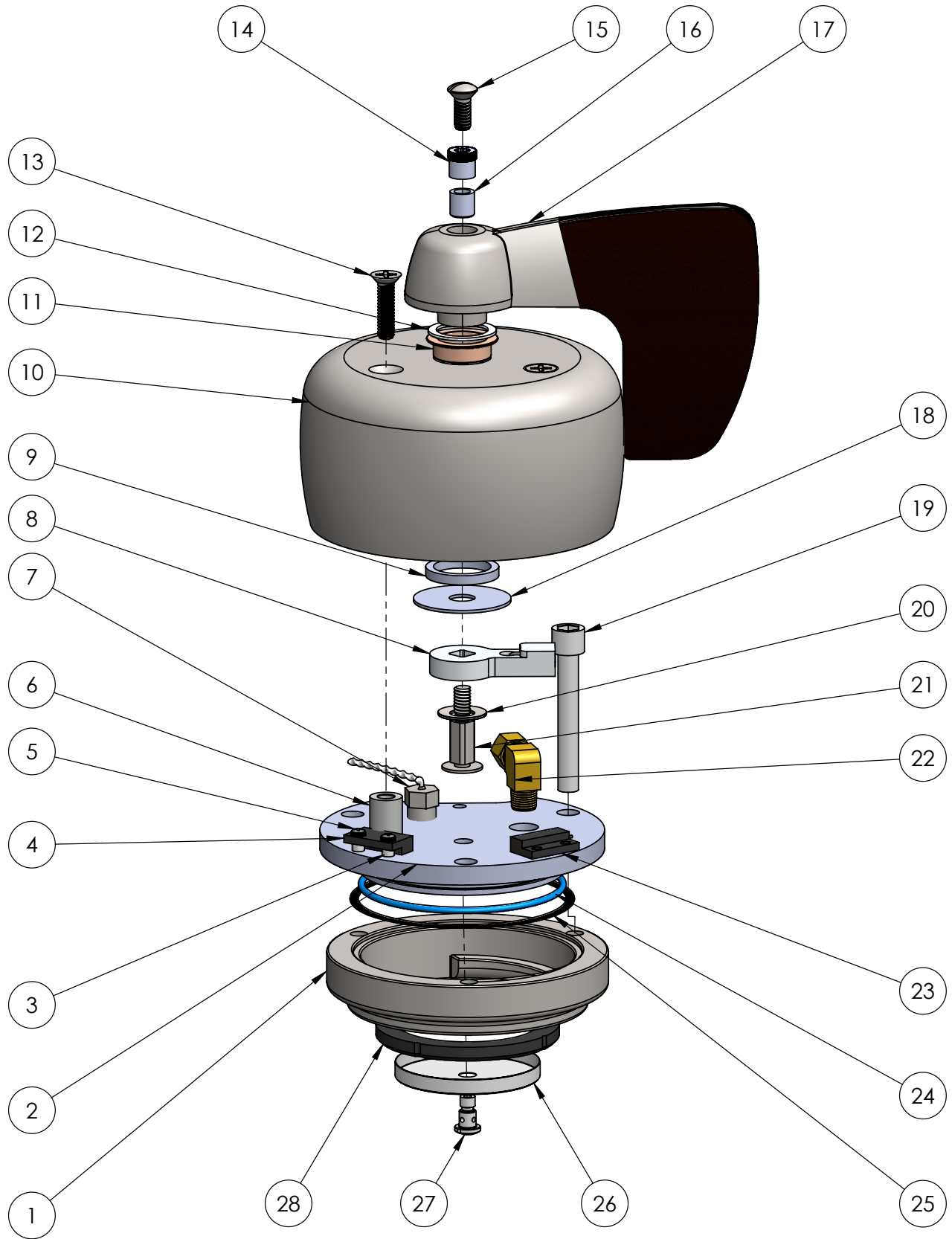
Additionally, all parts are referenced in the diagrams beginning on page 59.

Basic Parts Kit

Part Number	Part Description	Quantity
10000-16200	Oil Light Bushing for Actuator	1
10000-16210	Plastic Actuator Bearing	1
30004-50170	Water Level Probe, 125mm	1
42000-10020	Expansion Valve, Mini	1
46000-50070	58mm Shower Screen	6
46000-50090	O-ring, Group Cap, Silicone, Dash 151	1
46000-50100	Group Cap Paper Gasket	1
46000-50140	Anti-suction/Vacuum Valve, 1/4"	1
46000-50150	Copper Gasket for Anti-Suction, 1/4"	2
46000-50240	Disc Spring	1
46000-53050	O-ring for Bushing in Steam Valve	2
46000-53060	Bushing, Teflon, Steam Valve, 15 x 10.5mm	2
46000-53070	Teflon Gasket, Steam Valve and Group Cover, 27mm	3
46000-53090	O-ring for Brass Steam Valve Pin	4
46000-53100	Steam Seat Gasket	2
46000-53110	Teflon steam seal	2
46000-53150	Shoulder Bolt Shim, Thin, Grey	10
46000-56091	Portafilter Gasket, 6.1mm	6
46000-60000	Slayer Lube	1

Advanced Parts Kit

<i>Part Number</i>	<i>Part Description</i>	<i>Quantity</i>
30000-20000	24 VDC Power Supply	1
30000-20011	20 Amp Solid State Relay, Mini	1
30000-20030	Magnetic Sensor SPST N/C	1
30000-20040	Magnetic Sensor SPST N/O	1
30000-20140	Element Gasket	1
30000-20151	3-way Solenoid Valve, 2.0mm Brew Group, 24 VDC	1
30000-20191	2-Way Solenoid Valve, 2.5mm Needle Valve Assembly, 24 VDC	1
30004-20080	RTD, Brew Tank, 500 ohm	1
30004-20090	Steam Element, 1300 watt, 120 volt	1
30004-20091	Steam Element, 2000 watt, 220 volt	1
30000-20130	Brew Element, 600 Watt, 110 volts (unless using 220V)	1
30004-20130	Brew Element, 600 Watt, 220 volts (unless using 110V)	1
30004-20380	Pressure Transducer	1
44000-50190	Handle Spacer	1
44000-50210	Insert Nut	1
44000-50220	Handle Lock Screw	1
46000-50080	Stainless Diffuser Screw	2
46000-50120	PRV, 2.5 Bar	1
46000-50130	Copper Gasket for PRV, 3/8"	1
46000-50160	Check Valve	1
46000-50270	Group Cover Standoff	1
46000-50320	Brew Gauge, 300 PSI, Center Back Mount	1
30004-58030	Gear Pump	1



SLAYER

WWW.SLAYERESPRESSO.COM
206-284-7171

SHEET DWG. NAME

1

BREW ASSEMBLY
SINGLE GROUP
TOP ASSEMBLY

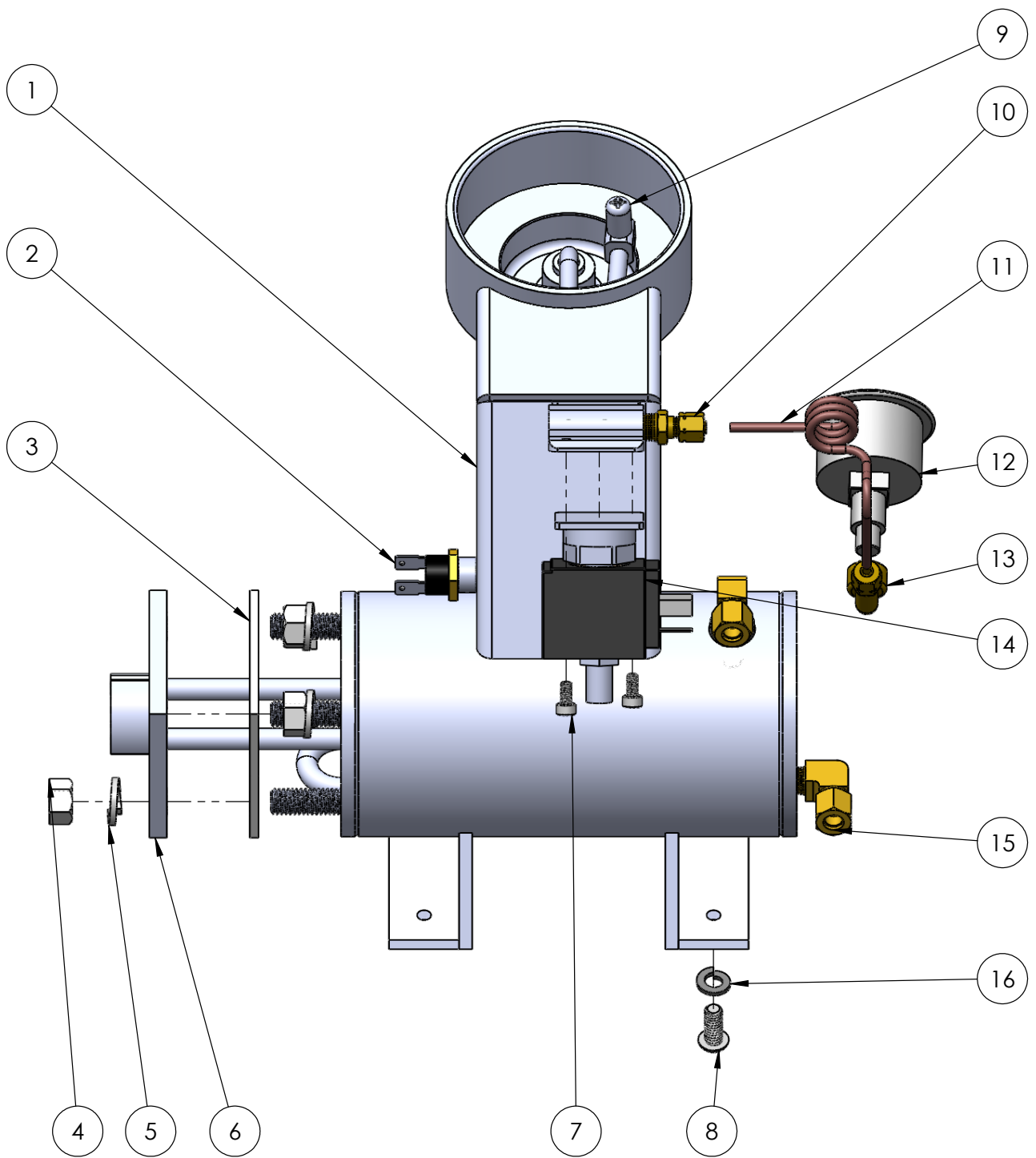
ITEM NO.	PART NUMBER	DESCRIPTION	QTY.
1	20000-56010	BAYONET RING	1
2	10000-16051	BREW CAP	1
3	44000-36000	INVERTED MAG SWITCH SPACER	2
4	30000-20040	MAGNETIC SWITCH N/O	1
5	44000-36140	SCREW/WASHER FOR INVERTED MAGNET	2
6	46000-50270	GROUP COVER SPACER	3
7	30004-20080	100 OHM RTD	1
8	10000-50051	TONGUE ASSEMBLY	1
9	10000-16210	PLASTIC SPACER	1
10	20000-16080	GROUP COVER	1
11	10000-16200	OILITE BUSHING	1
12	46000-53070	TEFLON GASKET 27MM	1
13	44000-50260	GROUP COVER MOUNT SCREW	3
14	44000-50210	INSERT NUT	1
15	44000-50220	HANDLE LOCK SCREW	1
16	46000-50190	HANDLE SPACER	1
17	22000-56500	BREW ACTUATOR	1
18	44000-16220	STAINLESS FINDER WASHER	1
19	44000-56000	BAYONET BOLT	3
20	46000-50240	DISC SPRING	1
21	10000-16161	VALVE STEM	1
22	42000-34561	1/4 COMP 90 DEG MODIFIED THREADS	1
23	30000-20030	MAGNETIC SWITCH N/C	1
24	46000-50090	GROUP CAP O RING	1
25	46000-50100	GROUP CAP PAPER GASKET	1
26	46000-50070	58 MM SHOWER SCREEN	1
27	46000-50080	DIFFUSER SCREW	1
28	46000-56091	6.1MM PORTAFILTER GASKET	1

SLAYER
WWW.SLAYERESPRESSO.COM
206-284-7171

SHEET DWG. NAME

2

BREW ASSEMBLY
SINGLE GROUP
TOP ASSEMBLY



SLAYER

WWW.SLAYERESPRESSO.COM
206-284-7171

SHEET DWG. NAME

1

BREW ASSEMBLY
SINGLE GROUP
BOTTOM ASSEMBLY

ITEM NO.	PART NUMBER	DESCRIPTION	Explode 1 Tank/QTY.
1	15004-16060	BREW TANK	1
2	30000-20250	100 DEG C THERMOSTAT	1
3	30000-20140	ELEMENT GASKET	1
4	44000-36080	3/8-16 NUT	4
5	44000-36070	3/8 LOCK WASHER	4
6	30004-20130	600 WATT BREW TANK ELEMENT 120V	1
7	44000-36310	SOLENOID MOUNT SCREW	2
8	44000-37030	TANK MOUNT BOLT	1
9	10000-16061	.7MM GIGGLEUR	1
10	42000-34660	1/8 NPT X 1/8 COMP	1
11	40000-32571	BREW GUAGE TUBE	1
12	46000-50320	300 PSI PRESSURE GAUGE	1
13	42000-34650	1/8 NPT X 1/8 COMPRESSION ELBOW	1
14	30000-20151	3 WAY SOLENOID	1
15	42000-34560	1/4 COMP 90 DEG	2
16	44000-36110	1/4 LOCK WASHER	1

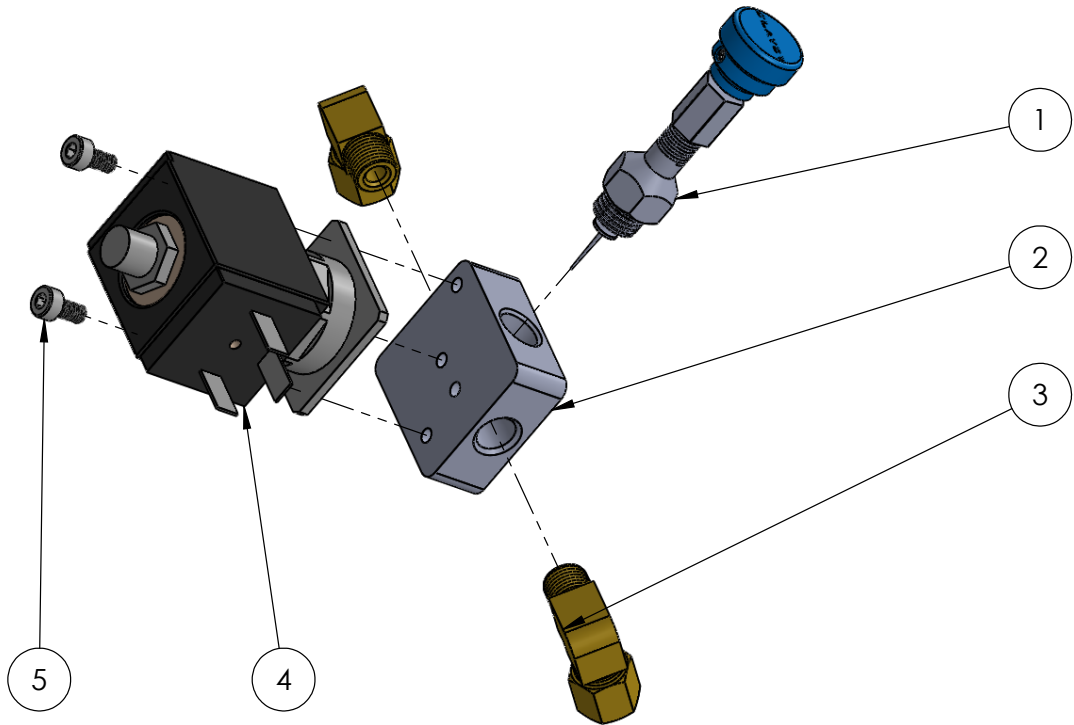

WWW.SLAYERESPRESSO.COM
 206-284-7171

SHEET DWG. NAME

2

BREW ASSEMBLY
 SINGLE GROUP
 BOTTOM ASSEMBLY

ITEM NO.	PART NUMBER	DESCRIPTION	QTY.
1	NEEDLE ASSEMBLY	NEEDLE ASSEMBLY	1
2	10004-50200	NEEDLE VALVE BODY, SINGLE GROUP	1
3	42000-34560	1/4 COMP 90 DEG	2
4	30000-20191	2 WAY SOLENOID	1
5	44000-36310	SOLENOID MOUNT SCREW	2

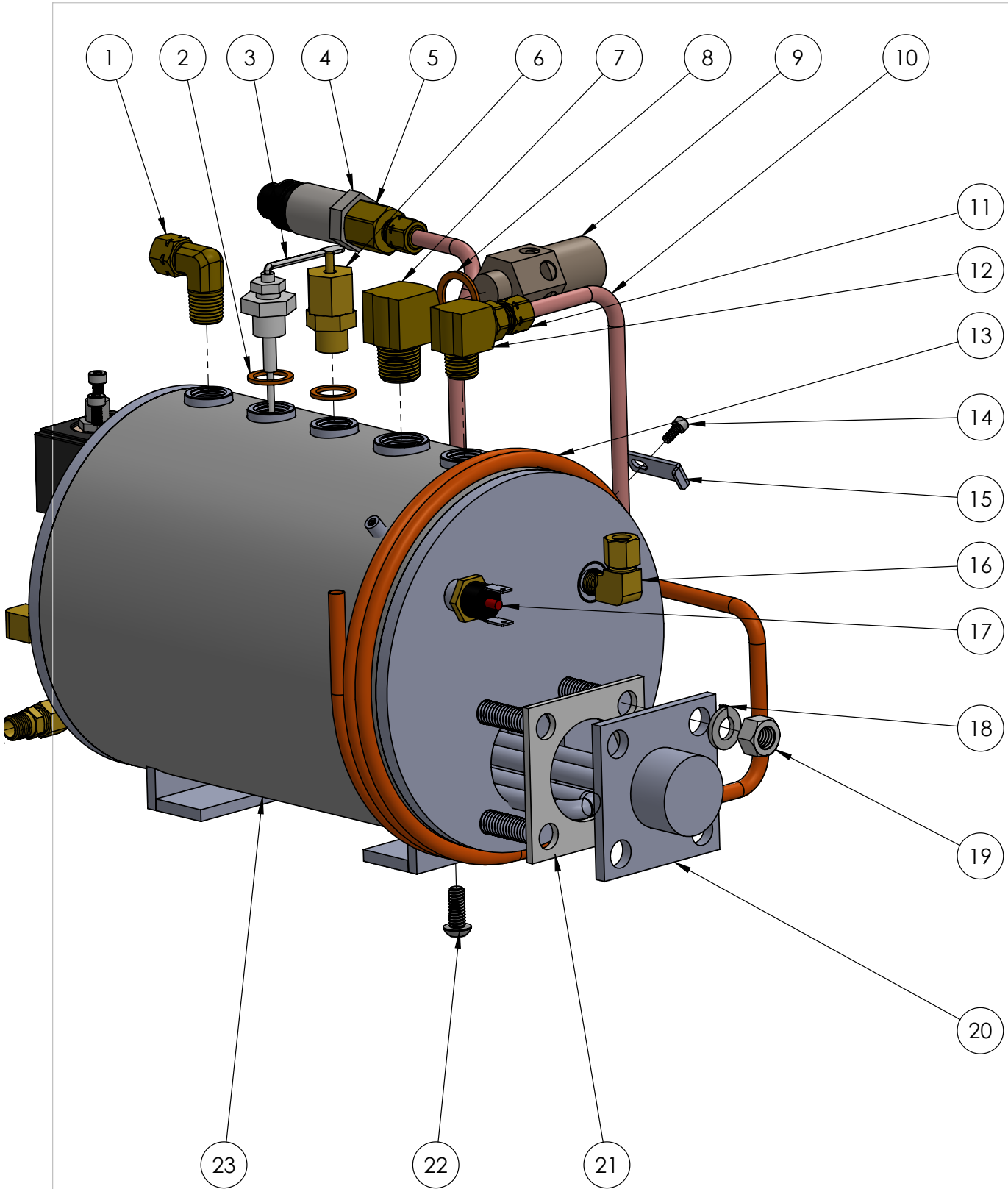


SLAYER

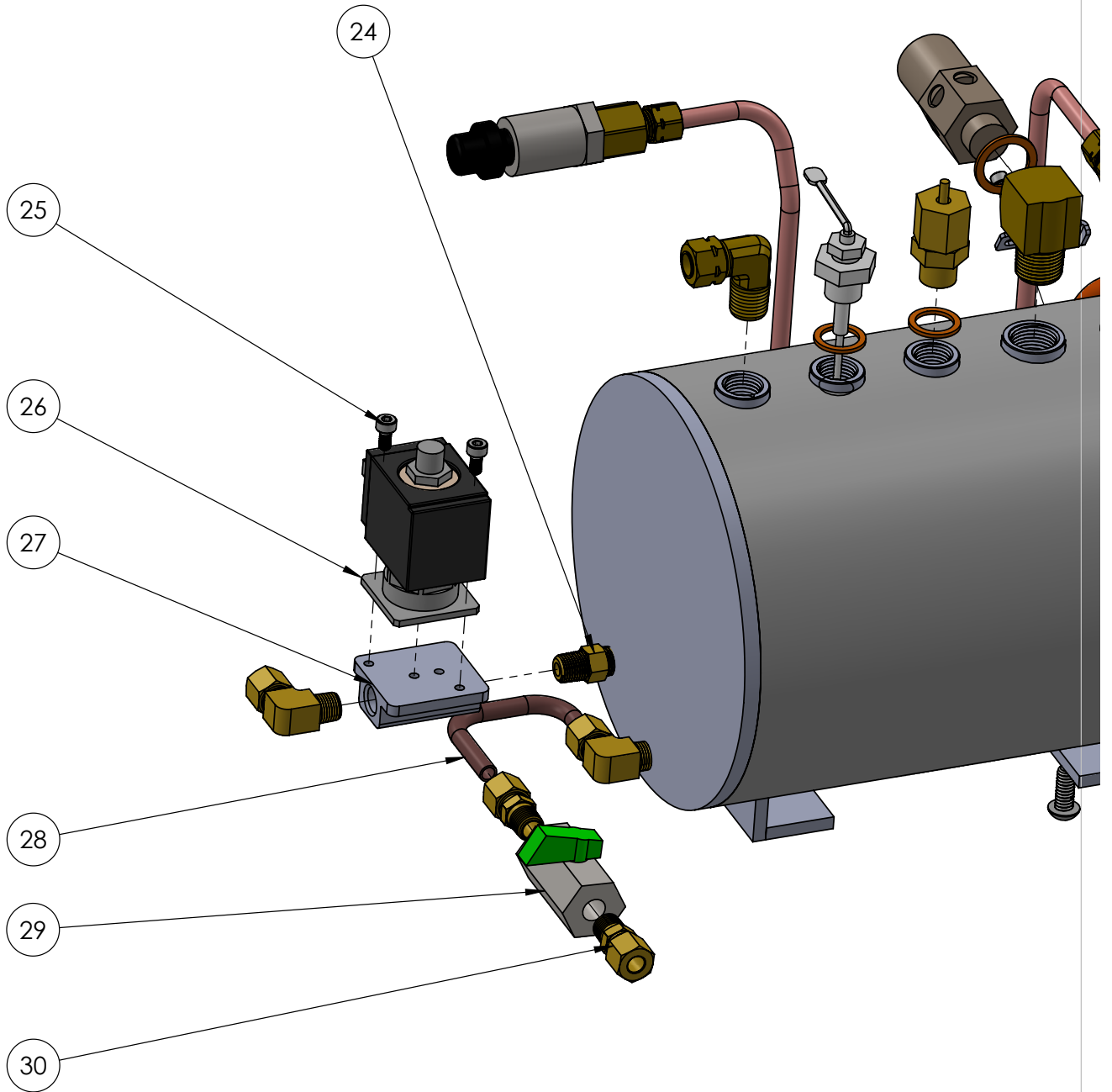
WWW.SLAYERESPRESSO.COM
206-284-7171

SHEET DWG. NAME

NEEDLE VALVE ASSEMBLY
SINGLE GROUP



<p>SLAYER</p> <p>WWW.SLAYERESPRESSO.COM</p> <p>206-284-7171</p>	SHEET DWG. NAME	
		STEAM TANK



SLAYER

WWW.SLAYERESPRESSO.COM
206-284-7171

SHEET DWG. NAME

STEAM TANK

ITEM NO.	PART NUMBER	DESCRIPTION	Tank Explode/QTY.
1	42000-34680	STEAM LINE ELBOW	1
2	46000-50150	COPPER GASKET 1/4 NPT	2
3	30000-50171	WATER LEVEL PROBE	1
4	30000-20380	PRESSURE TRANSDUCER	1
5	42000-34710	1/4 X 1/4 MALE COMPRESSION	1
6	46000-50140	VACUUM BREAKER	1
7	42004-34500	PRV ELBOW	1
8	46000-50130	COPPER GASKET 3/8 NPT	1
9	46000-50120	PRV 2.5 BAR	1
10	40004-32620	TRANSDUCER TUBE	1
11	42000-34700	1/4 X 1/4 FEMALE COMPRESSION	1
12	42004-34510	TRANSDUCER ELBOW	1
13	40004-32510	PREHEAT TUBE	1
14	44004-36070	PREHEAT CLAMP BOLT	2
15	13004-10110	PREHEAT TUBE CLAMP	2
16	42000-34561	1/4 COMP 90 DEG MODIFIED THREADS	3
17	30000-20260	145 DEG C THERMOSTAT	1
18	44000-36070	3/8 LOCK WASHER	4
19	44000-36080	3/8-16 NUT	4
20	30004-20090 30004-20091	1.3K WATT ELEMENT 120V 2K WATT ELEMENT 220V	1 1
21	30000-20140	ELEMENT GASKET	1
22	44000-37030	TANK MOUNT BOLT	2
23	15004-10110	STEAM TANK, SINGLE GROUP	1
24	42000-34180	1/8 NPT HEX NIPPLE	1
25	44000-36310	SOLENOID MOUNT SCREW	2
26	30000-20191	3 WAY SOLENOID	1
27	10999-20191	SOLENOID MOUNT	1
28	40004-32610	STEAM DRAIN TUBE	1
29	46000-50290	1/8 BALL VALVE	1
30	42000-34500	1/8 NPT X 1/4 COPPER COMP.	2

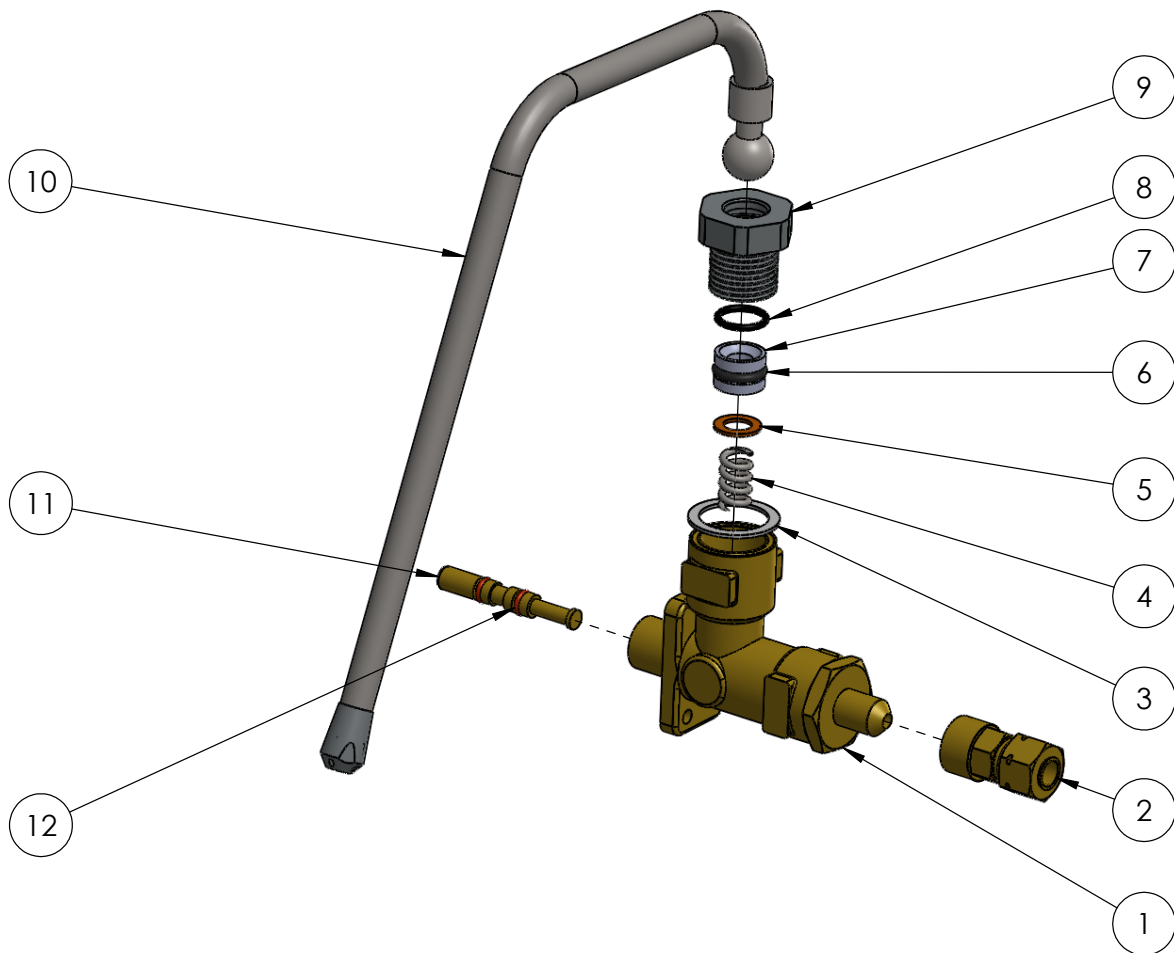
SLAYER

WWW.SLAYERESPRESSO.COM
206-284-7171

SHEET DWG. NAME

STEAM TANK

ITEM NO.	PART NUMBER	DESCRIPTION	QTY.
1	46000-53000	STEAM VALVE ASSEMBLY	1
2	42000-34540	1/4 BSPP F X 5/16 COMP (STEAM FITTING)	1
3	46000-53070	TEFLON GASKET 27MM	1
4	46000-53030	ARTICULATION SPRING	1
5	46000-53040	BRASS WASHER 15 MM	1
6	46000-53050	BUSHING O RING	1
7	46000-53060	BUSHING 15 X 10.5 MM	1
8	46000-53020	VALVE NUT O RING	1
9	46000-53010	STEAM VALVE NUT	1
10	40004-50330	STEAM WAND, SINGLE GROUP	1
11	46000-53080	STEAM TAP PISTON	1
12	46000-53090	PISTON O RING	2



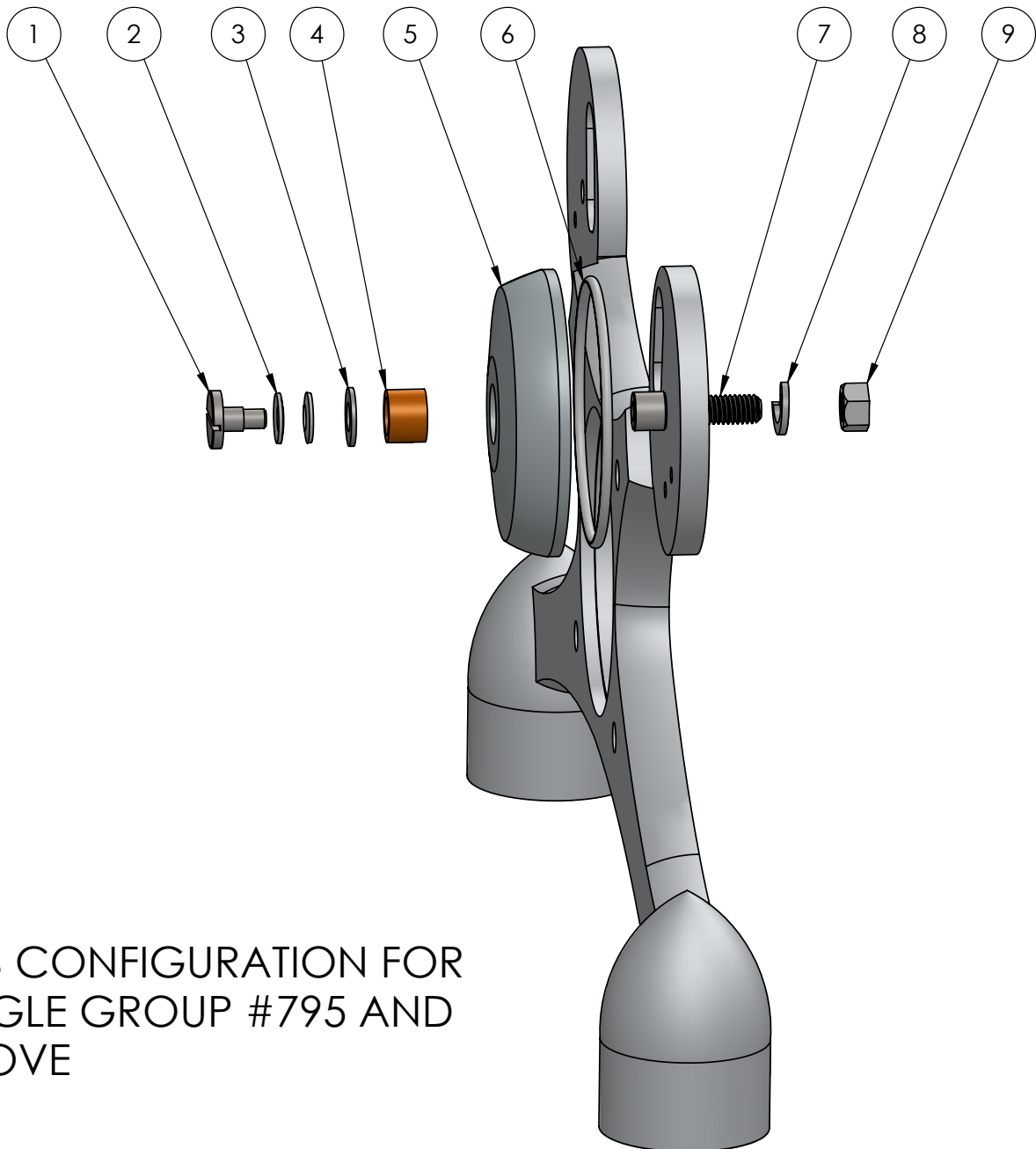
SLAYER
WWW.SLAYERESPRESSO.COM
 206-284-7171

SHEET DWG. NAME

1

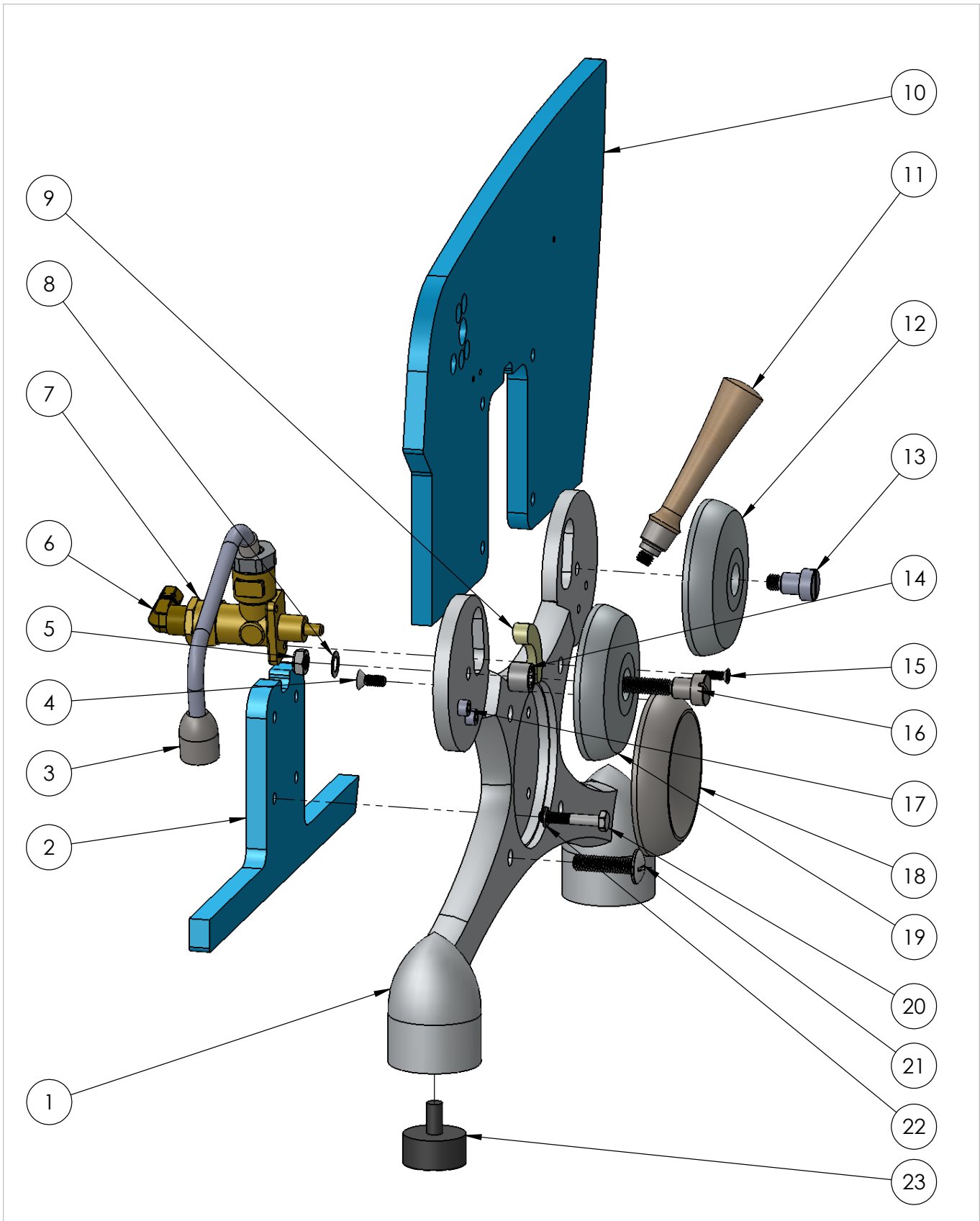
STEAM ASSEMBLY

ITEM NO.	PART NUMBER	DESCRIPTION	QTY.
1	10004-36600	ACTUATOR LOCKING BOLT	1
2	46004-10004	DISC SPRING	2
3	46004-10005	WASHER	1
4	46004-10003	BRONZE BEARING	1
5	10004-16120	ACTUATOR	1
6	46004-10002	TEFLON O RING	1
7	10004-36610	ACTUATOR SHOULDER MOUNT	1
8	44000-36070	3/8 LOCK WASHER	1
9	44000-36080	3/8-16 NUT	1



THIS CONFIGURATION FOR
SINGLE GROUP #795 AND
ABOVE

WWW.SLAYERESPRESSO.COM 206-284-7171	SHEET	DWG. NAME
	1	V4 ACTUATOR ASSEMBLY



<p>SLAYER</p> <p>WWW.SLAYERESPRESSO.COM</p> <p>206-284-7171</p>	SHEET DWG. NAME	
		X Assembly

ITEM NO.	PART NUMBER	DESCRIPTION	QTY.
1	20004-16140	X CASTING	1
2	10004-16010	SIDE PANEL, LOWER	1
3	40004-50450	HOT WATER WAND	1
4	44000-36060	HUB MOUNTING SCREW	1
5	44004-50530	3/8-16 NYLOC NUT	1
6	42000-34670	1/4 NPT X 1/4 COMP ELBOW	1
7	HOT WATER ASSEMBLY	HOT WATER ASSEMBLY	1
8	40004-50550	STAINLESS WASHER	1
9	10004-16130	ACTUATOR RAMP	1
10	10004-16020	SIDE PANEL, UPPER	1
11	16004-56750	ACTUATOR HANDLE	1
12	10004-16100	FALSE ACTUATOR	1
13	10004-36031	SHOULDER BOLT, SHORT	1
14	44004-50550	NEEDLE BEARING	1
15	44000-36010	STEAM VALVE MOUNTING SCREW	2
16	10004-36030	SHOULDER BOLT, LONG	1
17	44000-36260	ACTUATOR STOP BOLT, SHORT	2
18	10004-16090	HUB	1
19	10004-16110 10004-16120	LEFT ACTUATOR RIGHT ACTUATOR	1 1
20	44000-36101	X MOUNTING SCREW	4
21	44000-36040	SIDE PANEL MOUNT SCREW	4
22	44000-36110	1/4 LOCK WASHER	4
23	46000-50180	RUBBER FOOT	2

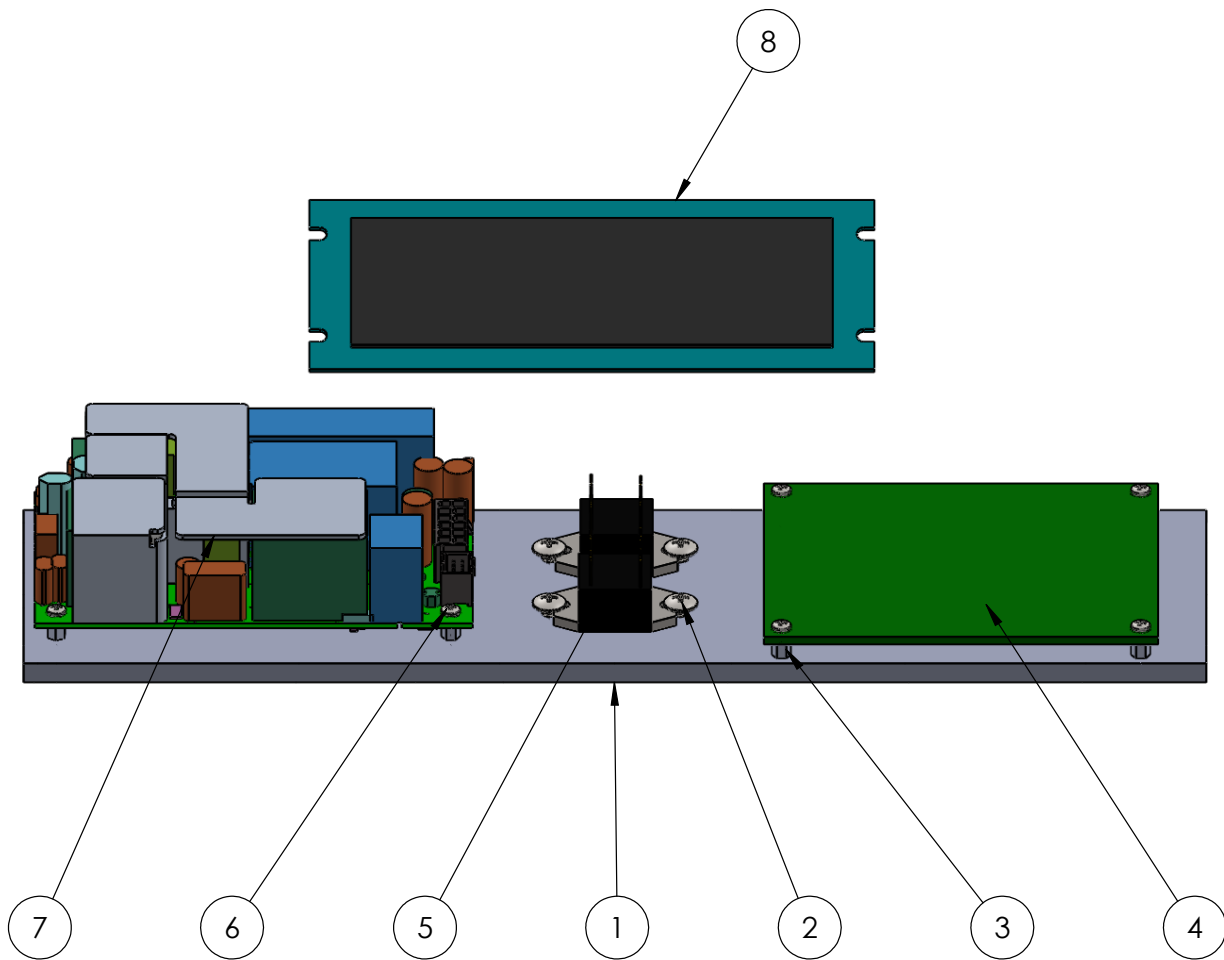
SLAYER


WWW.SLAYERESPRESSO.COM
206-284-7171

SHEET DWG. NAME

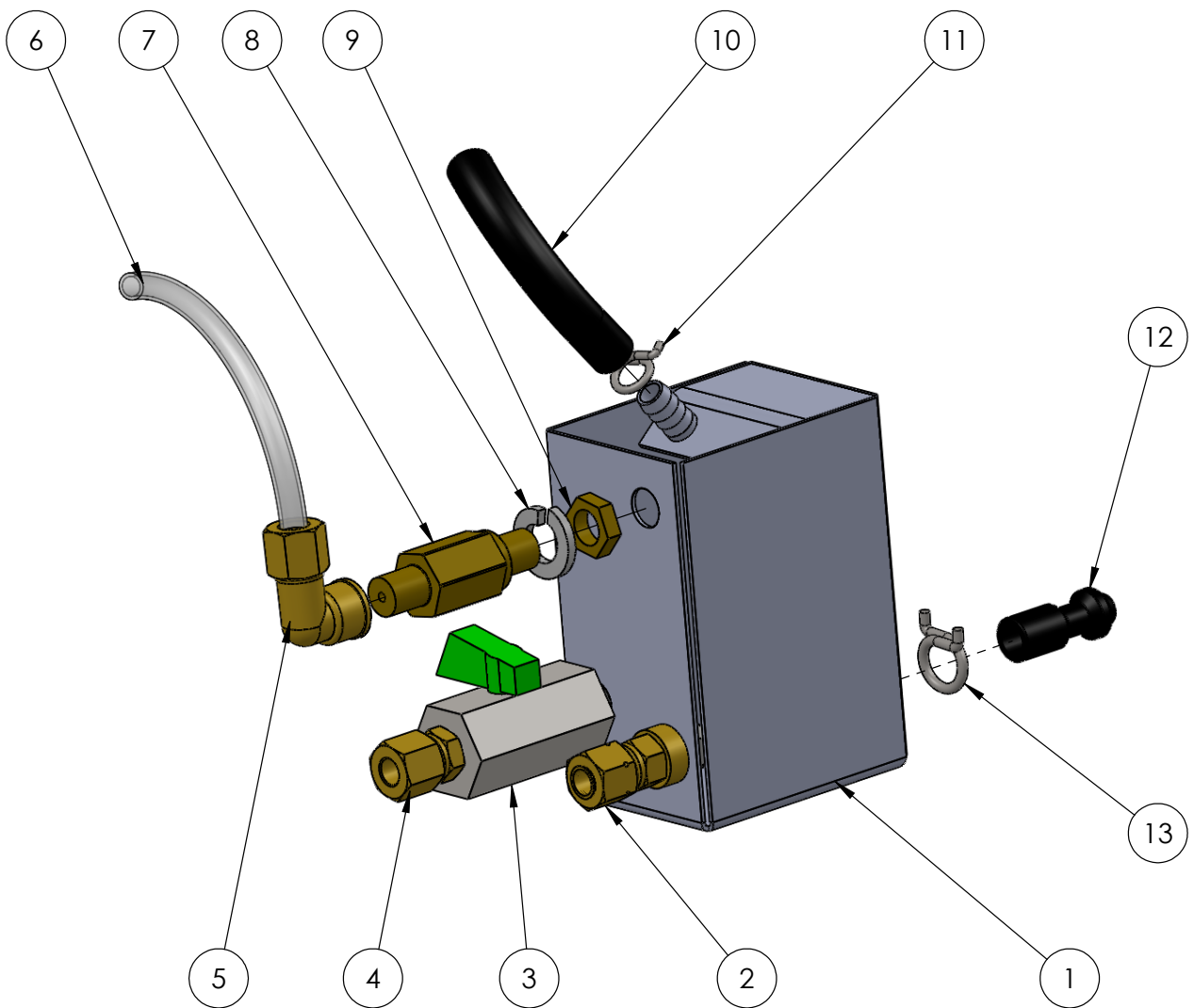
X Assembly

ITEM NO.	PART NUMBER	DESCRIPTION	Default/ QTY.
1	13004-10030	ELECTRONICS SUB PLATE	1
2	44000-36170	PANEL MOUNT SCREW	4
3	44000-36120	1/4 STANDOFF	8
4	30004-60100	MAIN BOARD	1
5	30000-20011	MINI 20 AMP SSR	2
6	44000-36130	SCREW/WASHER POWER SUPPLY	16
7	30000-20002	24V POWER SUPPLY	1
8	99004-60110	TOUCH DISPLAY ASSEMBLY	1



 WWW.SLAYERESPRESSO.COM 206-284-7171	SHEET	DWG. NAME
		ELECTRONICS PLATE SINGLE GROUP

ITEM NO.	PART NUMBER	DESCRIPTION	QTY.
1	13004-32090	DRAIN BODY	1
2	42000-34550	1/8 NPT F X 1/4 COMP	1
3	46000-50290	1/8 BALL VALVE	1
4	42000-34500	1/8 NPT X 1/4 COPPER COMP.	1
5	42000-34570	1/8 NPT F X 1/4 COMP 90 DEG	1
6	40000-32050	1/4 TEFLON TUBE	1
7	42000-10020	EXPANSION VALVE	1
8	44000-36070	3/8 LOCK WASHER	1
9	44000-10020	1/8 BSPP NUT	1
10	40000-32151	7/16 BLACK DRAIN HOSE	1
11	44000-36290	DRAIN LINE HOSE CLAMP, MEDIUM	1
12	40004-32090	DRAIN SEAL	1
13	44000-36280	DRAIN LINE HOSE CLAMP, SMALL	1



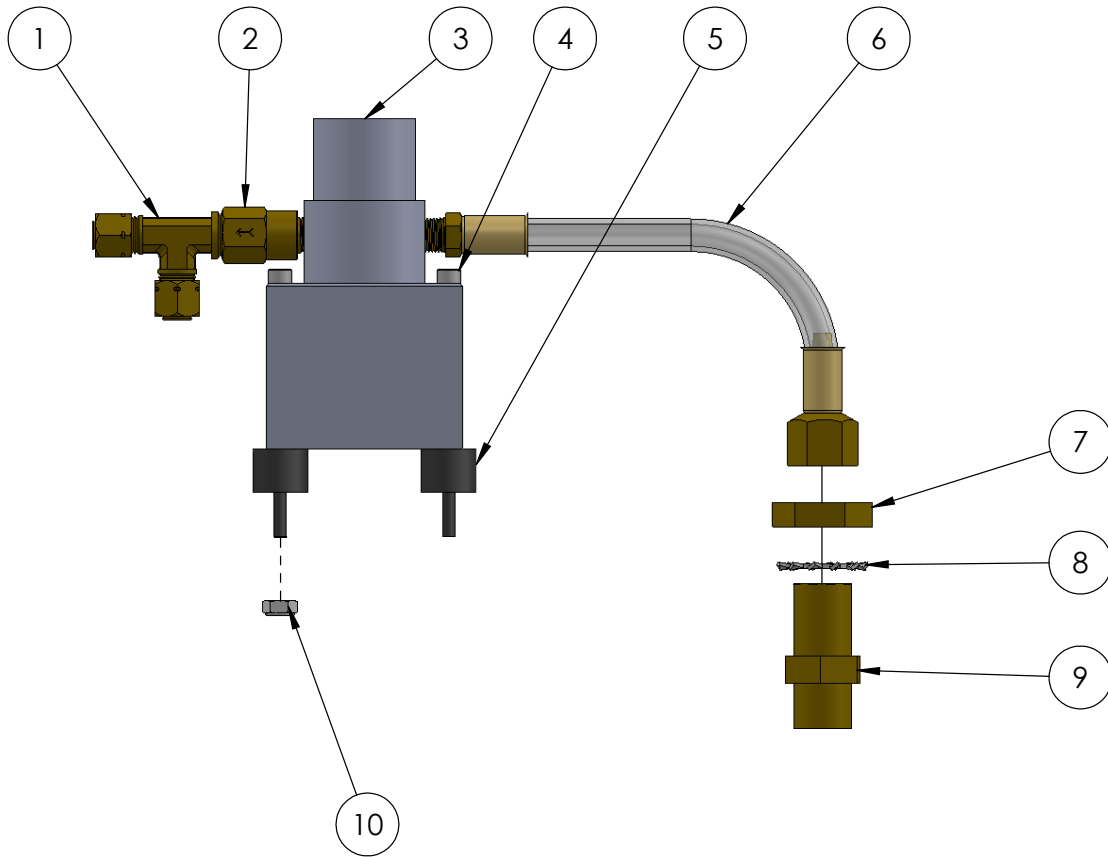
SLAYER

WWW.SLAYERESPRESSO.COM
206-284-7171

SHEET DWG. NAME

DRAIN ASSEMBLY,
SINGLE GROUP

ITEM NO.	PART NUMBER	DESCRIPTION	Default/ QTY.
1	42004-34520	MALE TEE	1
2	42004-34620	ONE WAY VALVE	1
3	30004-58030	GEAR PUMP	1
4	44004-37020	VIBRATION DAMPENER MOUNTING BOLT	2
5	40004-50181	VIBRATION DAMPENER	2
6	40004-25010	INLET HOSE	1
7	42000-10010	3/8 BSPP NUT	1
8	44000-36360	16MM SERRATED WASHER	1
9	42000-10010	3/8 WATER INLET FITTING	1
10	44004-36050	8-32 NYLOC NUT	2

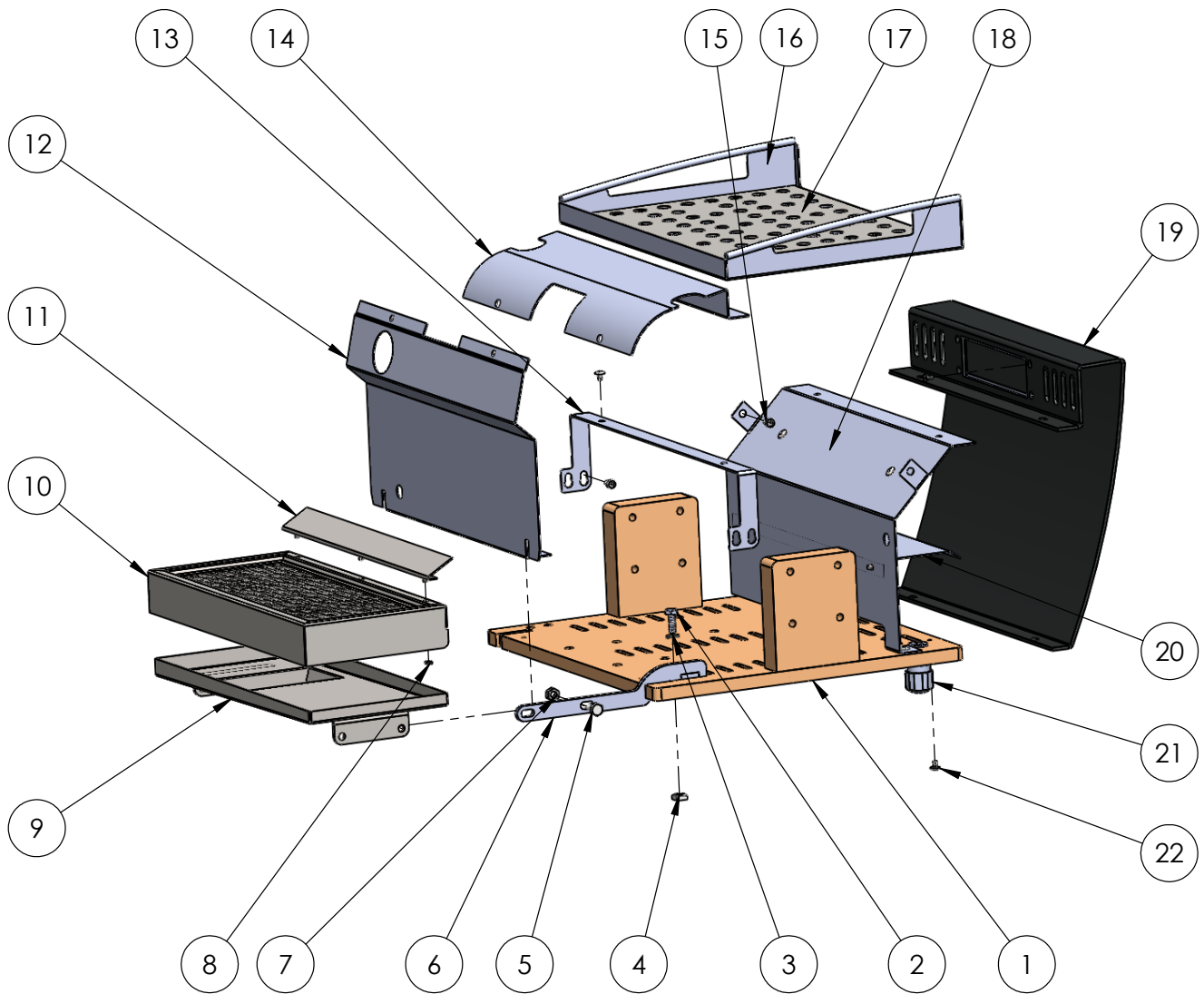


SLAYER

WWW.SLAYERESPRESSO.COM
206-284-7171

SHEET DWG. NAME

PUMP ASSEMBLY



SLAYER

WWW.SLAYERESPRESSO.COM
206-284-7171

SHEET DWG. NAME

PANEL ASSEMBLY
SINGLE GROUP

ITEM NO.	PART NUMBER	DESCRIPTION	QTY.
1	10004-10100	SUB PLATE ASSEMBLY	1
2	44000-36102	1/4-20 X .75 HEX HEAD BOLT	4
3	44000-36110	1/4 LOCK WASHER	4
4	44000-36151	1/4-20 SQUARE NUT	4
5	44000-36100	TRAY/BRACKET MOUNT SCREW	3
6	13004-16000	DRAIN TRAY BRACKET	2
7	44000-36150	1/4-20 HEX NUT	3
8	44000-37010	8-32 MIRROR NUT	3
9	13004-10000	DRAIN TRAY LINER	1
10	13004-10010	DRAIN TRAY COVER, SINGLE GROUP	1
11	13004-10020	MIRROR, SINGLE GROUP	1
12	13004-10070	FRONT PANEL, SINGLE GROUP	1
13	13004-10180	TOP PANEL MOUNT BRACKET	1
14	13004-10080	UPPER FRONT PANEL SINGLE GROUP	1
15	44004-36040	10-24 PANEL MOUNT BOLT	6
16	13004-10050	CUP TRAY	1
17	13004-10060	CUP TRAY COVER, SINGLE GROUP	1
18	13004-10170	ELECTRONICS HEAT SHIELD	1
19	13004-10090	BACK PANEL, SINGLE GROUP	1
20	13004-10250	ELECTRONICS SPLASH GUARD	1
21	30004-30410	CORD STRAIN RELIEF	1
22	44000-36170	PANEL MOUNT SCREW	19


WWW.SLAYERESPRESSO.COM
 206-284-7171

SHEET DWG. NAME

PANEL ASSEMBLY
SINGLE GROUP